

ADVANCE
LED
SUPPLY

LED Lighting CATALOG



LED
Lighting
Solutions

www.advanceledsupply.com

TABLE OF CONTENTS

RECESSED LIGHTS – 2

2", 3", 4", 6", Commercial, Can-Less, Custom, Trimless, Trims, LED Cans

LED BULBS – 9

A19, BR, PAR, Candelabra, Globe, Filament, T8, Corn, GU10, GU24, G24Q, MR16, G4, Landscape, G9

INDOOR LED FIXTURES – 13

Ceiling, High Bay, Integrated, Strip, Linear, Troffer, Pendant, Vanity, Panel

OUTDOOR LED FIXTURES – 19

Wall Packs, Flood Lights, Pole, Security, Wall Sconces, Canopy, Bollards

LANDSCAPE LIGHTING – 25

Up Lights, Path Lights, Well Lights, Hardscape, Accessories, Landscape Power Supplies

STEP LIGHTS – 29

Built-in LED Step Lights, Step Lights, Surface Mount Lights

TRACK LIGHTS – 31

Built-in LED Track Lights, Track Heads, Tracks, Connectors, Couplings

EMERGENCY LIGHTS – 33

Exit Signs, Bug Eyes, Battery Back-up Lights, Battery Back-ups, Inverters

UNDER CABINET LIGHTS – 35

Puck Lights, Linear Lights, Small Recessed Lights

CUSTOM LED CHANNEL – 36

LED STRIPS – 37

Economic, Color Changing, Premium, 110V Strips, Ultra Flex, Outdoor, LED Neon, Neon Flex System, Neon Cover

MODULES – 42

ALUMINUM CHANNEL – 43

No Cover, Slim, Spotless, Architectural

COLOR CHANGING CONTROLLERS – 46

Mi Light, Wall Mount, RF, Amplifiers, DMX

POWER SUPPLIES – 49

Adapters, Indoor, Dimmable, Outdoor

LIGHTING CONTROLLERS – 52

Dimmers, Low Voltage, Caséta, Wifi, Sensors, Title 24

ELECTRICAL – 55

Switches, Receptacles, Wall Plates

ACCESSORIES – 56

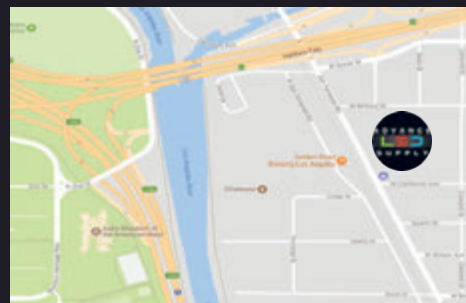
LED Strip Accessories, Wires, Sockets

Store Address

5404 San Fernando Rd.
Glendale, CA 91203

Tel: (818) 649-1999
Fax: (818) 649-1998

sales@advanceledsupply.com



We are located between the
5 Interstate and 134 Freeway.

RECESSED LIGHTS

2 INCH LED TRIMS



2" LED Canless Trim
8W = 50W Halogen
15W = 100W Halogen
2700K/3000K/4000K/5000K
Finishes in White, Black, Bronze,
Satin Nickel, and Chrome
Baffled and Smooth



2" LED Trim
9W = 50W Halogen
3000K/4000K
Square and Round Shape Available
Baffled, Smooth, and Gimbal
Must use 2" LED Can w/ Driver



2" LED Gimbal Trim
5W = 35W Halogen
2700K/3000K/4000K/5000K

3 INCH LED TRIMS



3" LED Smooth
8W = 50W Halogen
2700K/3000K
4000K/5000K



3" LED Baffle
9W = 60W Halogen
2700K/3000K
4000K/5000K



3" LED Square
9W = 60W Halogen
3000K/4000K
5000K



3" LED Adjustable
9W = 50W Halogen
2700K/3000K
4000K/5000K

RECESSED LIGHTS

4 INCH LED TRIMS



4" LED Smooth
10W = 50W Halogen
12V Model Available
2700K/3000K/3500K
4000K/5000K/6500K
RGB + CCT Available



4" LED Baffle
10W = 50W Halogen
2700K/3000K/3500K
4000K/5000K



4" LED Square
10W = 75W Incandescent
12V Model Available
Smooth, Baffle and Adjustable Available
2700K/3000K/4000K/5000K



4" LED Adjustable
10W = 50W Halogen
12V Model Available
Scoop, Flat, and Eyeball Available
2700K/3000K/4000K/5000K

5-6 INCH LED TRIMS



5-6" LED Smooth
18W = 120W Incandescent
2700K/3000K/3500K
4000K/5000K/6500K
RGB + CCT Available



5-6" LED Baffle
18W = 120W
Incandescent
2700K/3000K
4000K/5000K



5-6" LED Square
16.5W = 120W Incandescent
Smooth and Baffle Available
2700K/3000K
4000K/5000K



5-6" LED Adjustable
11W = 75W
Incandescent
Scoop, Flat, and Eyeball
Available
2700K/3000K
4000K/5000K

RECESSED LIGHTS

COMMERCIAL LIGHT SET



4" Commercial Light
27W = 1,800-1,950 Lumens
3000K/4000K/5000K

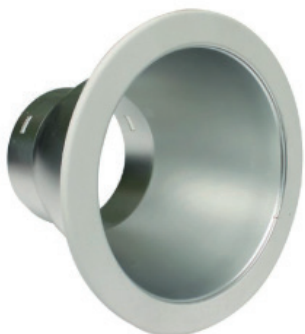


6" Commercial Light
20W = 1,700 Lumens
5000K



6", 8", 10" Slim Commercial Light
15W = 1,275 Lumens
20W = 1,720 Lumens
3000K/4000K/5000K
Finishes in White and Haze

COMMERCIAL LIGHT ENGINES



Commercial Trims
Available in 6", 8", and 10"



LED Light Engine
18W = 1,606-1,639 Lumens
27W = 1,800-1,950 Lumens
40W = 3,346-3,447 Lumens
54W = 4,500 Lumens
3000K/4000K/5000K

COMMERCIAL HOUSINGS



Housing for Commercial Trims
Available in 4", 6", 8", and 10"

RECESSED LIGHTS

SLIM PANEL CAN-LESS RECESSED LIGHTS



4" and 6" Can-Less LED Slim Panel Light

4" 11W = 65W Incandescent

6" 14W = 100W Incandescent

3000K/4000K/6000K

Tri-Color (3000K/4000K/5000K)

12V Model Available

Snap-on finishes in Black, White,
Satin Nickel, and Bronze
Square and Round Available



8" Can-Less LED Slim Panel Light

18W = 120W Incandescent

3000K/4000K/6000K

Tri-Color (3000K/4000K/5000K)

Snap-on finishes in Black, White,
Satin Nickel and Bronze

ADJUSTABLE CAN-LESS RECESSED LIGHTS



3" Can-Less LED Gimbal Light

8W = 50W Halogen

2700K/3000K/4000K/5000K

Finishes in White, Black, and Satin Nickel
Square and Round Available



3.5" Can-Less LED Scoop Light

6W = 50W Halogen

3000K/4000K



4" Can-Less LED Eyeball Light

12W = 100W

Incandescent

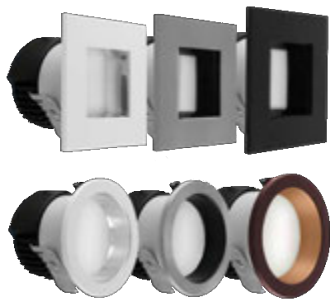
2700K/3000K

4000K/6000K



RECESSED LIGHTS

CUSTOM LED TRIMS



3" Custom LED Retrofit

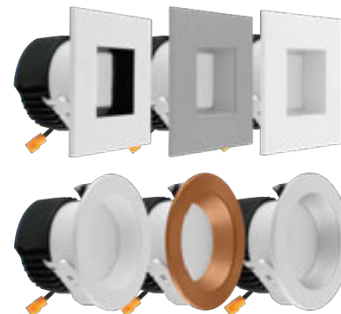
12W = 75W Incandescent

2700K/3000K/3500K/4000K

Finishes in White, Copper, Satin Nickel, Black, Bronze, and Haze

Reflector finish is also customizable

Smooth and Baffled, Square and Round



4" Custom LED Retrofit

12W = 75W Incandescent

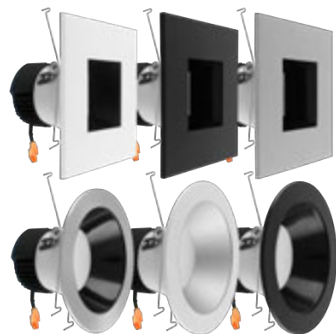
17W = 120W Incandescent

2700K/3000K/3500K/4000K

Finishes in White, Copper, Satin Nickel, Black, Bronze, and Haze

Reflector finish is also customizable

Smooth and Baffled, Square and Round



6" Custom LED Retrofit

17W = 120W Incandescent

2700K/3000K/3500K/4000K

Finishes in White, Copper, Satin Nickel, Black, Bronze, and Haze

Reflector finish is also customizable

Smooth and Baffled, Square and Round



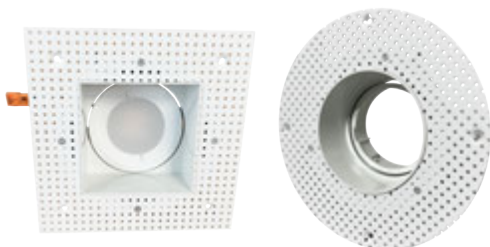
4" Adjustable Custom LED Retrofit

12W = 75W Incandescent

2700K/3000K/3500K/4000K

Finishes in White, Black, Satin Nickel, Bronze

19 ° and 38 ° Beam Angle Available



4" Mud-In Trimless LED Retrofit

9W = 65W Incandescent

3000K

Square and Round

Fits in Regular 4" Can



4" and 6" Economic Custom LED Retrofit

4" 9W = 65W Incandescent

4" 15W = 100W Incandescent

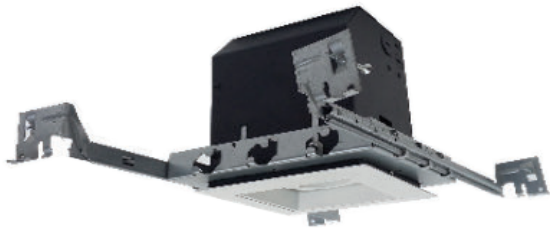
2700K/3000K/4000K/5000K

Finishes in White, Black, Bronze, Brushed Nickel, and Gold

Smooth and Baffled, Square and Round

RECESSED LIGHTS

TRIMLESS



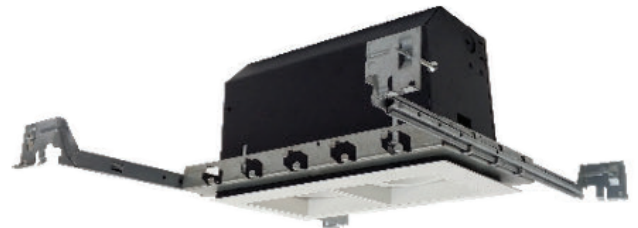
1 Head Flangeless LED Lights

15W = 1,200 Lumens

3000K/4000K

Triac and 0-10V Dimming Optional

15°, 25°, and 39°



2 Head Flangeless LED Lights

30W = 2,400 Lumens

3000K/4000K

Triac and 0-10V Dimming Optional

15°, 25°, and 39°



3 Head Flangeless LED Lights

45W = 3,600 Lumens

3000K/4000K

Triac and 0-10V Dimming Optional

15°, 25°, and 39°



4 Head Flangeless LED Lights

60W = 4,800 Lumens

3000K/4000K

Triac and 0-10V Dimming Optional

15°, 25°, and 39°

TRIMS



Baffled Trims



Smooth Trims



Adjustable Trims



Reflective Trims

Available in 2", 3", and 4". And a variety of finishes.

RECESSED LIGHTS

LED T24 CANS



2" IC Can NC



2" IC Can RM



3" IC Can NC



3" IC Can RM



4" IC Can NC



4" IC Can RM



6" IC Can NC



6" IC Can RM



Shallow 4" IC Can NC



Shallow 4" IC Can RM



Shallow 6" IC Can NC



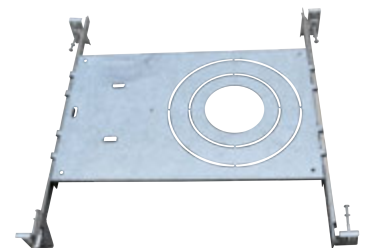
Shallow 6" IC Can RM



Fire Rated 4" IC Can NC



Fire Rated 6" IC Can NC



Can-Less 2", 4", 6" NC

LED BULBS

A19 BULBS

12V Available
2700K/3000K
4000K/5000K



Frosted A19 LED Bulb
10W = 60W Incandescent
16W = 100W Incandescent

2700K/3000K/5000K



Filament A19 LED Bulb
6.5W = 65W Incandescent
10W = 100W Incandescent

2700K-6500K+RGB

Color Changing LED Bulb

9W = 60W Incandescent
Compatible with
Mi Light System



BR BULBS

2700K/3000K
4000K/5000K



BR20 LED Bulb
8W = 50W Incandescent

2700K/3000K
4000K/5000K



BR30 LED Bulb
9W = 65W Incandescent

2700K/3000K
4000K/5000K



BR40 LED Bulb
12W = 90W Incandescent

PAR BULBS

3000K/5000K



T24 PAR16 LED Bulb
7W = 50W Incandescent

3000K/5000K



PAR16 LED Bulb
4W = 45W Incandescent

2700K/3000K
4000K/5000K



PAR20 LED Bulb
8W = 50W Incandescent

Short Neck
Available
2700K/3000K
4000K/5000K



PAR30 LED Bulb
13W = 75W Incandescent

2700K/3000K
4000K/5000K/6500K



High Output PAR30 LED Bulb
40W = 70W Metal Halide

2700K/3000K
4000K/5000K



PAR38 LED Bulb
13W = 100W Incandescent

LED BULBS

CANDELABRA BULBS

2700K/5000K
Flame Tip
E12 Candelabra

3.3W = 40W Incandescent
5.5W = 60W Incandescent



12V Available
2700K/3000K
4000K/6000K

Torpedo
E12 Candelabra

4W = 40W Incandescent
6W = 60W Incandescent



3000K/5000K
E11
Mini Light

4W = 40W Incandescent



GLOBE BULBS

2700K/5000K
G16 Globe
LED Bulb
4W = 40W Incandescent
5.5W = 60W Incandescent
Frosted and Clear
E26 and E12



2700K/3000K
4000K/5000K
G25 Globe
LED Bulb
4W = 40W Incandescent
6W = 60W Incandescent
Frosted and Clear



FILAMENT BULBS

2200K
T10 LED Bulb
4W = 40W Incandescent



1800K/3000K/5000K
T30 LED Bulb
5W = 40W Incandescent



3000K
S11 Lamp
1W = 10W Incandescent



1800K
Edison LED Bulb
4W = 40W Incandescent



LED BULBS

T8 BULBS



4ft T5



2ft / 3ft / 4ft T8
Available in
Clear and Frosted



8ft T8
Available in
Clear and Frosted



U Lamp
Available in
Clear and Frosted

CORN BULBS



Corn Bulbs

14W = 50W HID - 18W = 60W HID
27W = 70W HID - 36W = 80W HID
45W = 100W HID - 75W = 125W HID
100W = 175W HID - 125W = 400W HID
3000K/5000K



180° Corn Bulbs

54W = 175W HID
115W = 400W HID
5000K

GU10 BULBS

GU10 LED Bulb
7W = 50W Halogen
2700K/3000K/5000K



**High CRI
GU10 LED Bulb**
7.5W = 65W Halogen
2700K/3000K
10°, 25°, 36°, and 60°



**Color Changing
GU10 LED Bulb**
4W = 35W Halogen
2700K-6500K+RGB



GU24 BULBS



LED A19 GU24
9W = 60W Incandescent
Ballast Compatible
2700K/3000K/3500K/4000K

G24Q BULBS



4 Pin G24 LED Bulb
12W = 26W CFL
Ballast Compatible
3000K/3500K/4000K/5000K

LED BULBS

MR16 BULBS



3000K
6000K

MR11 LED Bulb
4W = 30W Halogen



2700K/3000K
4000K/5000K

Glass MR16 LED Bulb
5W = 40W Halogen



2700K/3000K
4000K/5000K

MR16 LED Bulb
7W = 50W Halogen



2700K-6500K+RGB
**Color Changing
MR16 LED Bulbs**
4W = 35W Halogen



2700K/3000K
**High CRI
MR16 LED Bulb**
7.5 - 9W = 50W Halogen
10°, 25°, 36°, and 60°

G4 BULBS



3000K
4000K

Silicone G4 LED
1.5W = 20W Halogen
2.5W = 30W Halogen
3.5W = 35W Halogen



3000K

JC Lamp
1.5W = 10W Halogen



3000K

**G4 LED
Puck Lamp**
1.5W = 10W Halogen



3000K
5000K

**120V G8
LED Lamp**
4W = 40W Halogen

LANDSCAPE BULBS



3000K
4000K

**S8 Bayonet
LED Lamp**
1W = 10W
Halogen



3000K

Wedge Lamp
1.5W = 15W
Halogen



3000K
5000K

PAR36 Lamp
15W = 100W
Halogen



3000K
4000K

G9 LED Bulb
5W = 40W Halogen

G9 BULBS

INDOOR LED FIXTURES

CLOUD LIGHT



LED Cloud Fixture

11" 15W = 900 Lumens
14" 16.5W = 1,200 Lumens*
16" 23W = 1,400 Lumens
4000K

*Available with Occupancy Sensor and Battery Back-Up



LED Cloud Fixture w/ Satin Nickel Finish

12" 15W = 800 Lumens
14" 22W = 800 Lumens
16" 23W = 1,200 Lumens
3000K/4000K

SURFACE MOUNT



LED Cusp Light

4" 10W = 650 Lumens
6" 15W = 1,000 Lumens*
8" 18W = 1400 Lumens
2700K/3000K/4000K/5000K
*Finishes in White, Bronze, and Satin Nickel



Ultra Slim LED Disk Light

6" 12W = 900 Lumens
10" 24W = 2000 Lumens
3000K/4000K/5000K
Round and Square



Round Slim LED Disk Light

5" 10W = 650 Lumens*
7" 15W = 1000 Lumens*
12" 22W = 950 Lumens
3000K/4000K/5000K
Tri-Color (3000K/4000K/5000K)
*Finishes in Black, Bronze, and Brushed Nickel
Battery Back Up Available



Square Slim LED Disk Light

5" 10W = 650 Lumens
7" 15W = 1000 Lumens
12" 22W = 950 Lumens
3000K/4000K/5000K
Tri-Color (3000K/4000K/5000K)



Flush Mount Panel LED Light

11" 12.5W = 875 Lumens
13" 15W = 1050 Lumens
15" 22.5W = 1650 Lumens
Tri-Color (3000K/4000K/5000K)
Finishes in White and Satin Nickel



Built-in LED Motion Sensor Ceiling Light

4" 10W = 600 Lumens
6" 15W = 900 Lumens
3000K/4000K

INDOOR LED FIXTURES

HIGH BAY LIGHT



**Mini UFO LED
High Bay Light**
50W = 6,750 Lumens
3000K/4000K/5000K
Finishes in Black and White



**Compact UFO LED
High Bay Light**
150W = 21,727 Lumens
200W = 26,733 Lumens
5000K



**Sleek UFO LED
High Bay Light**
100W = 13,000 Lumens
150W = 19,500 Lumens
3000K/4000K/5000K
Finishes in Black and White



**UFO LED High Bay Light
w/ Aluminum Reflector**
100W = 13,000 Lumens
150W = 19,500 Lumens
3000K/4000K/5000K
Finishes in Black and White



**Mini UFO LED High Bay Light
w/ PC Reflector**
50W = 6,750 Lumens
3000K/4000K/5000K
Finishes in Black and White



**UFO LED High Bay Light
w/ Poly Carbonate Reflector**
100W = 13,000 Lumens
150W = 19,500 Lumens
3000K/4000K/5000K
Finishes in Black and White



Linear LED High Bay Light
100W = 13,000 Lumens
150W = 17,000 Lumens
5000K
Frosted Cover Available
Motion Sensor and
Battery Back-Up Optional



2' Linear LED High Bay Light
110W = 13,750 Lumens
165W = 23,100 Lumens
4000K/5000K
Frosted and Clear Lens
Motion Sensor and
Battery Back-Up Optional



4' Linear LED High Bay Light
220W = 30,800 Lumens
4000K/5000K
Frosted and Clear Lens
Motion Sensor and
Battery Back-Up Optional

INDOOR LED FIXTURES

INTEGRATED TUBES



T5 LED Surface Mount Light

4' 22W = 2,200W Lumens

6500K

Includes Mounting Clips and
Linking Connectors

Available in Clear And Frosted

STRIP LIGHTS



LED Surface Mount Fixture

4' 40W = 4,400 Lumens

8' 60W = 7,100 Lumens

8' 85W = 9,000 Lumens

4000K/5000K

0 - 10V Dimmable

Battery Back-Up and Motion
Sensor Available



LED Commercial Strip Light

4' 40W = 5,286 Lumens

8' 64W = 8,320 Lumens

3500K/4000K/5000K

0 - 10V Dimmable

Battery Back-Up and Motion
Sensor Available



LED Vapor Light Fixture

2' 25W = 3,125 Lumens

4' 40W = 4,400 Lumens

4000K/5000K

Tri-Color (3000K/4000K/5000K)

0 - 10V Dimmable



Wrap Around LED Fixture

2' 20W = 1,900 Lumens

4' 40W = 3,800 Lumens

3500K/4000K/5000K

0 - 10V Dimmable



Tri-Color LED Mini Strip Fixture

2' 14W = 2,200 Lumens

4' 40W = 4,400 Lumens

8' 60W = 6,600 Lumens

Tri-Color (3000K/4000K/5000K)

0 - 10V Dimmable

Battery Back-Up and
Microwave Sensor Available



Built-in Motion Sensor LED Fixture

4' 40W = 4,800 Lumens

4000K

0 - 10V Dimmable

Integrated Microwave Sensors and Battery Back-ups are available for most LED Strip Light products. Microwave Sensors can be programmed to dim when motion is detected.



INDOOR LED FIXTURES

LINEAR PENDANT LIGHT

Single Run Linear Fixture

2' 18W = 1,720 Lumens

4' 36W = 3,560 Lumens

5' 45W = 4,303 Lumens

8' 60W = 6,300 Lumens

0-10V Dimmable

3000K/4000K/5000K

Finishes in Black and Silver



Single Run Linear Fixtures can be surface mounted or suspended.

CONTINUOUS LINEAR LIGHT

Continuous Linear Fixture

4' 40W = 4,320 Lumens

8' 75W = 7,875 Lumens

0-10V Dimmable

4000K/5000K



Continuous Corner Fixture

40W = 4,280 Lumens

0-10V Dimmable

4000K/5000K



Continuous Linear Fixtures can be seamlessly linked without any gaps between fixtures. Continuous fixtures are easy to open for internal connections. These lights can also be surface mounted or suspended.



INDOOR LED FIXTURES

TROFFER LIGHTS



2X2 LED Troffer
35W = 4,900 Lumens
3500K/4000K/5000K



2X4 LED Troffer
50W = 6,850 Lumens
3500K/4000K/5000K

PENDANT LIGHTS

We are authorized dealers for a variety of high-end LED fixtures. Experience the beauty, sophistication and quality of what lighting should be. Stop by our showroom to browse our full selection of brands and fixtures.



4' Up and Down Architectural Linear Fixture
Down 25W = 2,750 Lumens
Up 15W = 1,650 Lumens
3500K/4000K/5000K
0 - 10V Dimmable



Up and Down Round LED Pendant Fixture
Up 25W = 2,100 Lumens
Down 25W = 2,100 Lumens
3500K/4000K/5000K
0 - 10V Dimmable



4' Linear Crystal LED Pendant Fixture
22W = 1,100 Lumens
4000K
Dimmable



Spun Metal Shade Pendant
11.5W = 400 Lumens
Finishes in Graphite and White
Interior finishes in Copper, Blue, Gold, and White
3000K
Dimmable

VANITY LIGHTS



24" LED Vanity Light
23W = 2,000 Lumens
3000K/4000K



24" Linear Vanity Light
15W = 1,200 Lumens
3000K
Finishes in White, Black, Brushed Nickel, and Gold

INDOOR LED FIXTURES



1X1 LED Panel Light
18W = 1,800 Lumens
2700K/3000K/4000K/5000K



0.5X2 LED Panel Light
12.5W = 875 Lumens
Tri-Color
(3000K/4000K/5000K)



1X2 LED Panel Light
25W = 2,500 Lumens
3000K/3500K/4000K/5000K
Tri-Color
(3000K/4000K/5000K)



1X4 LED Panel Light
40W = 4,600 Lumens
50W = 4,000 Lumens*
3000K/3500K/4000K/5000K
*Tri-Color
(3000K/4000K/5000K)



2X2 LED Panel Light
40W = 4,600 Lumens
3000K/3500K/4000K/5000K



2X4 LED Panel Light
50W = 5,750 Lumens
60W = 6,900 Lumens
72W = 8,280 Lumens
3000K/3500K/4000K/5000K

PANEL ACCESSORIES



Battery Back-Up



1X4 Panel Frame



2x2 Panel Frame



2x4 Panel Frame



Suspension cables



Earthquake Clip

OUTDOOR LED FIXTURES

WALL PACK



**Non-Cutoff
LED Wall Pack**

30W = 3,300 Lumens
60W = 6,600 Lumens
80W = 9,000 Lumens
120W = 12,000 Lumens
3000K/4000K/5000K
0-10V Dimmable



**Cutoff
LED Wall Pack**

50W = 5,500 Lumens
80W = 9,600 Lumens
120W = 14,400 Lumens
3000K/4000K/5000K
0-10V Dimmable



**HL Non-Cutoff
LED Wall Pack**

28W = 3,400 Lumens
50W = 5,600 Lumens
80W = 10,100 Lumens
120W = 15,900 Lumens
3000K/4000K/5000K
0-10V Dimmable



**Motion Sensor
LED Wall Pack**

60W = 5,300 Lumens
120W = 11,000 Lumens
4000K/5000K



**Dusk to Dawn
LED Wall Pack**

13W = 1,700 Lumens
20W = 2,100 Lumens
3000K/4000K/5000K



**Battery Back-Up
LED Wall Pack**

45W = 4,800 Lumens
5000K



**Small Dusk to Dawn
LED Wall Pack**

8W = 560 Lumens
3000K/5000K
Round/Square



Adjustable LED Wall Pack

12W = 1,200 lm - 20W = 2,200 lm
30W = 3,200 lm - 50W = 5,200 lm
80W = 9,000 lm - 120W = 13,700 lm
3000K/5000K
Finishes in Bronze and White



**Rotatable
LED Wall Pack**

40W = 4,890 Lumens
80W = 10,870 Lumens
3000K/5000K



Vandal Proof

20W = 1,920 Lumens
3000K/4000K/5000K

OUTDOOR LED FIXTURES

FLOOD LIGHTS

1/2" Knuckle Mount 104° Slim Flood Light

15W = 1,500 Lumens

30W = 3,000 Lumens

50W = 5,000 Lumens

3000K/5000K

Finishes in Bronze and White



15W



30W



50W

Tri-Color Flood Light

15W = 1,947 Lumens

30W = 3,819 Lumens

50W = 7,048 Lumens

80W = 11,200 Lumens

Tri-Color (3000K/4000K/5000K)

Finishes in Bronze and White

Trunnion and 1/2" Knuckle Mount



15W



30W/50W



80W

FLOOD LIGHT ACCESSORIES



4 Inch Cover
Finishes in Bronze
and White



1/2" Knuckle Mount
Photocell

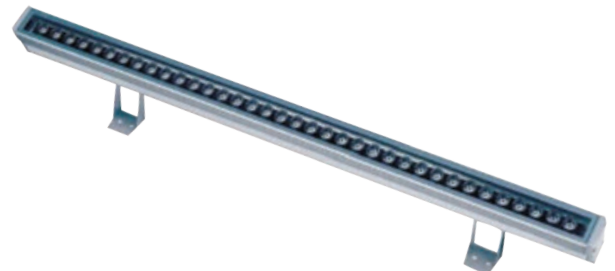
WALL WASHERS



2' 24V LED Wall Washer

24W = 1,480 Lumens

3000K/6000K/Blue/RGB



4' 24V LED Wall Washer

48W = 3,000 Lumens

3000K/6000K/Blue/RGB

OUTDOOR LED FIXTURES

POLE LIGHTS

LED Area Light

100W = 15,526 Lumens

150W = 24,515 Lumens

200W = 31,218 Lumens

240W = 35,569 Lumens

300W = 45,313 Lumens

4000K/5000K

Finishes in Bronze and White

Dimming Motion

Sensor Available



100W



150W/200W



240W/300W

POLES



Round Pole



4 x 4 Pole

POLE LIGHT ACCESSORIES



Slip Fit Mount



Adjustable Arm Mount



Straight Arm Mount



Trunnion Mount



Round Pole Mount



Microwave Sensor



Photocell Sensor



4 x 4 to Round Adapter



Bull Horns

OUTDOOR LED FIXTURES

SECURITY LIGHTS

1 Head Security Light

10W = 800 Lumens

5000K

Finishes in
Bronze and White



2 Head Security Light

20W = 1,900 Lumens

3000K/5000K

Finishes in
Bronze and White

Available with and without
Dimming Motion Sensor



2 Head Security Light w/ Motion Sensor

20W = 1,400 Lumens

3000K/5000K

Finishes in
Bronze and White



2 Square Head Security Light w/ Motion Sensor

20W = 1,500 Lumens

3000K/5000K

Finishes in
Bronze and White



BULLET LIGHTS

60° Bullet Light

1/2" Knuckle Mount

15W = 1,500 Lumens

28W = 2,800 Lumens

42W = 4,200 Lumens

50W = 5,000 Lumens

3000K/5000K



OUTDOOR LED FIXTURES

WALL SCONCES



LED Down Light

15W = 1,144 Lumens

3000K/5000K

Finishes in Black, Silver, Bronze, and Gray



LED Up and Down Light

20W = 1,667 Lumens

30W = 2,000 Lumens

3000K/5000K

Finishes in Black, Silver, White, Bronze, and Gray



LED Square Lantern Light

12W = 1,100 Lumens

3000K/4000K

Can be used as pier light



Bulk Head Wall Light

10W = 900 Lumens

3000K

Finishes in White and Black



Square Up and Down Light

10W = 800 Lumens

3000K

Finishes in White, Gray, and Black



LED Cloud Sconce

15W = 800 Lumens

3000K



LED Vapor Light

20W = 1,700 Lumens

3000K/4000K



LED Lantern Light

12W = 1,500 Lumens

3000K/4000K

Dusk to dawn sensor optional



Jelly Jar LED Lantern Light w/ Photocell

12W = 800 Lumens

3000K

OUTDOOR LED FIXTURES

CANOPY LIGHTS

LED Gas Light

45W = 5,513 Lumens
75W = 8,997 Lumens
100W = 13,279 Lumens
150W = 20,041 Lumens
5000K



45W/75W



100W/150W

Canopy LED Light

45W = 4,400 Lumens
60W = 7,400 Lumens
3000K/4000K/5000K
0-10V Dimmable



45W



65W

Tri-Color Canopy Round LED Light

25W = 3,350 Lumens - 55W = 7,423 Lumens
100W = 13,400 Lumens
Tri-Color (3000K/4000K/5000K)
0-10V Dimmable

Dimming Motion Sensor Available
Emergency Battery Back Up Available



25W/55W/100W

BOLLARD LIGHTS



Cast Aluminum
Bollards



Fiberglass
Bollards



Stainless Steel
Bollards



Steel
Bollards



Small Low Voltage
Bollards

LANDSCAPE LIGHTING

BUILT-IN LED UP LIGHTS



**Black Built-in
LED Up Light**
7W = 510 Lumens
3000K/6000K



**Small Built-in
LED Up Light**
5W = 350 Lumens
3000K



**Bronze Built-in
LED 45° Up Light**
6W = 450 Lumens
3200K/5000K



**RGB+CCT Built-in
LED Up Light**
9W = 700 Lumens
24V DC / 120V AC

UP LIGHTS



**Black Cast
Aluminum
Up Light**



**Cast Brass Up
Light**
Finishes in Bronze,
Gun Metal, and Silver



**Cast Brass Bullet
Up Light**
Finishes in Bronze
and Silver



**PAR36 Cast Brass
Up Light**
13W = 780 Lumens
3000K/5000K



**Cast Brass Shroud
Up Light**
Bronze only Finish



Slim Brass Up Light
Finishes in
Bronze and Gun Metal



Ringed Brass Up Light
Finishes in
Bronze and Gun Metal

All Up Lights include a 5W LED Bulb, equivalent to a 35W Halogen. LED color comes in 2700K, 3000K, 4000K, and 5000K

LANDSCAPE LIGHTING

PATH LIGHTS



Pagoda Light
Includes LED Bulb
1.5W = 110 Lumens
3000K/4000K
Finishes in Bronze, Black,
Verde Green, and
Stainless Steel



Adjustable Path Light
Includes LED Bulb
5W = 35W Halogen
2700K/3000K
4000K/5000K
Finishes in
Bronze, Black,
and Gun Metal



**Mushroom
Path Lights**
1.5W = 20W Halogen
3000K/4000K



2 Head Path Light
Includes LED Bulb
2 5W = 2 35W Halogen
2700K/3000K
4000K/5000K
Finishes in
Bronze, Black,
and Gun Metal



**Sleek Path
Light**
3W = 5W Halogen
3000K



**Slim L-Shaped
Path Light**
3W = 25W Halogen
3000K
Finishes in Black and
Stainless Steel



**Small Bronze
Path Light**
3W = 10W Halogen
3000K



**Slim Angled
Path Light**
3W = 25W Halogen
3000K
Finishes in Black and
Stainless Steel

LANDSCAPE LIGHTING

WELL LIGHTS



Clear Cover Well Light
Uses PAR36 and MR16
Finishes in Black,
Gun Metal, and Bronze



Grill Cover Well Light
Uses PAR36 and MR16
Finishes in Black,
Stainless Steel, Gun Metal,
and Bronze



**Brass Well Light
w/ Shroud**
Uses MR16
Finishes in Bronze and
Gun Metal



2" Built-in LED Well Light
1W = 10W Halogen
3000K/6000K
Available in Square
And Round



**4" Well Light
w/ PVC Sleeve**
Uses MR16
Available in Square
And Round



**Built-in LED IP68
Pool Light**
3W = 25W Halogen
3000K/6000K



**Well Light
w/ PVC Sleeve**
Uses PAR36



**2 1/4" Built-in LED
Well Light**
3W = 30W Halogen
3000K/5000K



**6 1/4" Built-in LED
Well Light**
7W = 50W Halogen
3000K/5000K



**4 Window Built-in
LED Well Light**
3W = 20W Halogen
3000K/6000K



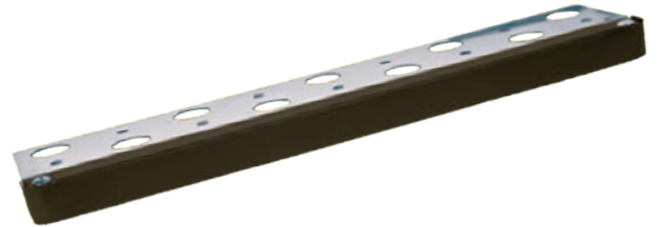
**Adjustable Built-in LED
Well Light**
3W = 20W Halogen
3000K/6000K

LANDSCAPE LIGHTING

HARDSCAPE LIGHTS



7" Thin LED Hardscape Light
1W 12V AC/DC = 80 Lumens
3000K



13" Thin LED Hardscape Light
2W 12V AC/DC = 160 Lumens
3000K

LANDSCAPE ACCESSORIES



**10, 12, 14 AWG
Landscape Wire**



Photocell



Timer



**AC to DC
Rectifier**

LANDSCAPE POWER SUPPLIES



**75W Landscape
Power Supply**



**200W Landscape
Power Supply**



**150W Landscape
Power Supply**



**300W & 600W
Landscape
Power Supply**

STEP LIGHTS

BUILT-IN LED STEP LIGHT



Step Light Engine

120V/12V 3W = 118 Lumens

Fits in a Single Gang Box

3000K/5000K



Available in Vertical,
Clear, and Louver
Finishes in White,
Bronze, and
Antique Bronze

1 1/2" LED Step Lights

12V 1W = 60 Lumens

2850K/4000K

Finishes in Brushed Nickel,
White, and Black



Round



Round Hood



Vertical Decorative Step Light

120V 3.5W = 250 Lumens

Fits in a Single Gang Box

3000K



Horizontal Decorative Step Light

120V 3.5W = 250 Lumens

Fits in a Single Gang Box

3000K

Finishes in Black, White,
Brushed Nickel, Grey,
Stainless Steel, and Espresso

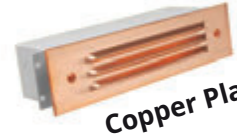
Finishes in Black, White,
Brushed Nickel, Grey,
Stainless Steel, and Espresso

STEP LIGHTS

STEP LIGHTS



Brass Housing



Copper Plates

Available in Raw Copper



Steel Housing



Brass Plates

Available in Gun Metal, Antique Bronze, Silver Plated, and Old Copper

**Recessed Step Light
w/ Interchangeable Covers**

4" 1W = 100 Lumens

8" 2W = 200 Lumens

3000K

Available in Louver Window
and Open Window



Aluminum Plates

Available in Black, Bronze,
Rusted, and White

SURFACE MOUNT STEP LIGHTS



**4" Brass Slim
Built-in LED Step Light**

1W = 110 Lumens

2700K/3500K



**7" Brass Slim
Built-in LED Step Light**

2W = 200 Lumens

2700K/3500K



Finishes in Bronze,
Gun Metal, and
Silver

**3 3/8" Brass
Round Step Light**

Includes LED Bulb

1W = 100 Halogen

3000K



**8" Brass Louver
Built-in LED Step Light**

5W = 450 Lumens

3000K



**3" Brass Round
Built-in LED Step Light**

1.5W = 100 Lumens

2700K



**4 3/4" Brass Rectangle
Built-in LED Step Light**

3W = 250 Lumens

2700K

TRACK LIGHTS

BUILT-IN LED TRACK LIGHTS



Mini LED Track Light
7W = 440 Lumens
3000K/4000K/5000K
Finishes in Black and White



15° Spot LED Track Light
14W = 900 Lumens
3000K/4000K
Finishes in Black and White



Bullet LED Track Light
9W = 600 Lumens
3000K
Finishes in Satin Nickel and White



Small Bullet LED Track Light
7W = 550 Lumens
3000K
Finishes in Satin Nickel, Black, and White



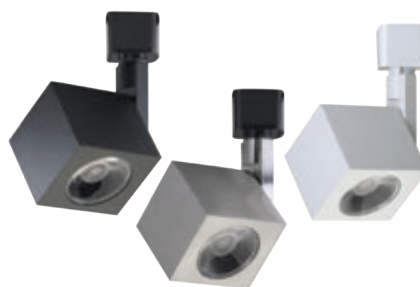
Swivel Head LED Track Light
7W = 500 Lumens
3000K
Finishes in Satin Nickel, Black, and White



24° and 36° Round LED Track Light
12W = 820 Lumens
3000K
Finishes in Satin Nickel, Black, and White



24° and 36° Pipe LED Track Light
12W = 820 Lumens
3000K
Finishes in Satin Nickel, Black, and White



36° Square LED Track Light
12W = 820 Lumens
3000K
Finishes in Satin Nickel, Black, and White

TRACK LIGHTS

TRACK HEADS



Gimbal Track Heads
GU10, PAR20, PAR30, PAR38



Cylinder Track Heads
GU10, PAR20, PAR30, PAR38



**Universal PAR
Lamp Holder**
PAR20, PAR30, PAR38

TRACK SYSTEM



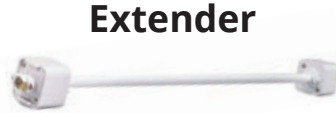
Track



End Cap



Extender



CONNECTORS



Conduit End Connector



Floating Canopy Connector



Live End Connector

COUPLINGS



Coupling



T Coupling



X Coupling



Mini Coupling



L Coupling

Track Heads, Tracks, Connectors and Couplings are available in White, Black, and Silver.

EMERGENCY LIGHTS

EXIT SIGN



**Edge Lit LED Exit Sign W/
Battery Back-Up**

Available in Red
and Green Letters
Single and Double Face Optional



**Combo LED Exit Sign
W/ Battery Back-Up**

Available in Red
and Green Letters
Finishes in White and Black



**LED Exit Sign
W/ Battery Back-Up**

Available in Red
and Green Letters
Single and Double Face Optional
Finishes in White and Black



**Recessed LED Exit Sign
W/ Battery Back-Up**

Available in Red
and Green Letters
Single and Double
Face Optional



**Light Pipe Combo LED Exit
Sign W/ Battery Back-Up**

Available in Red and Green Letters
Single and Double Face Optional
Finishes in White and Black

BUG EYES



**Slim LED Bug Eye
w/ Battery Back-Up**

Finishes in
Black and White



**Mini LED Bug Eye
w/ Battery Back-Up**

Finishes in
Black and White



**LED Bug Eye
w/ Battery Back-Up**



**Waterproof LED Bug Eye
w/ Battery Back-Up**

EMERGENCY LIGHTS

BATTERY BACK-UP LIGHTS



**LED Panel Light
w/ Battery Back-Up**



**LED Wall Packs
w/ Battery Back-Up**



**Architectural Lights
w/ Battery Back-Up**



**LED Strip Light
w/ Battery Back-Up**



**Decorative LED Light
w/ Battery Back-Up**



**Surface Mount Light
w/ Battery Back-Up**

INVERTERS

**Battery Back-Up
for Circuits**
225W - 350W
550W - 750W
Available in 110V
and 225V



225W



350W/550W



750W

BATTERY BACK UPS



External Battery Back-Up
Available in High and
Low Voltage

UNDER CABINET LIGHTS

12V PUCK LIGHT

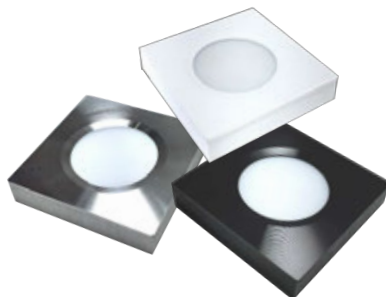


UL LED Puck Light

3W = 270 Lumens

3000K/6000K/RGBW

Finishes in White, Black,
and Aluminum



Square UL LED Puck Light

3W = 260 Lumens

3000K/6000K

Finishes in White, Black,
and Aluminum



Slim LED Puck Light

2.2W = 210 Lumens

3000K/4000K/6000K

Finishes in White, Black,
and Chrome

110V LINEAR LIGHT

Tri-Color LED Under Cabinet Light

11" 6W = 350 Lumens

14" 8W = 570 Lumens

22" 10W = 750 Lumens

28" 12W = 900 Lumens

42" 18W = 1,250 Lumens

Tri-Color (3000K/4000K/5000K)

Finishes in White and Bronze



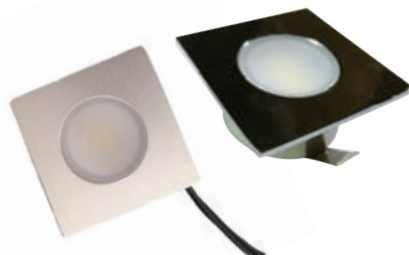
12V SMALL RECESS LIGHT



Round 1" LED Puck Light

1.5W = 100 Lumens

3000K/6000K



Square 1" LED Puck Light

1.5W = 100 Lumens

3000K/6000K

Finishes in Aluminum
and Chrome



2" UL LED Puck Light

3W = 180 Lumens

2700K/3000K/4000K/6000K

Finishes in White,
Black, and Aluminum

CUSTOM LED CHANNEL

CUSTOM SEAMLESS LIGHTING

LED linear lighting systems deliver seamless illumination to any surface area. Our linear lighting systems are mostly used in undercabinet lighting but they can be used in offices, displays, bars, shelves, coves, and more. You can choose any channel or LED strip. You can pick practically any color between 1800K-6000K. We offer two types of color changing lights: RGB or RGBW. Our knowledgeable LED technicians can answer all your questions and recommend the optimal solution for your project.

To begin building your Custom LED Undercabinet lighting system start with the following steps:

STEP 1 TAKE MEASUREMENTS

Create a simple drawing of your cabinets and count all the separate pieces you will need. Make sure to account for all dividers. For some sections you might need multiple pieces. To get accurate measurements, measure from the side you plan to install the lights. (Front, back, or middle.) Then, write down all the measurements next to the relevant pieces.

STEP 2 DETERMINE POWER SOURCES

On your drawing, mark down where the power sources are located. Then verify if the circuit is either 110V AC, 12V AC, or 12V DC.

STEP 3 SELECT A LED STRIP

The kelvin chart on this page shows the different color temperatures available, you can even select color changing LED strips. The brightness of the LED strips, are at the recommended brightness level for undercabinet lighting. But lower and higher brightness levels are also available for different applications.

STEP 4 SELECT AN ALUMINUM CHANNEL

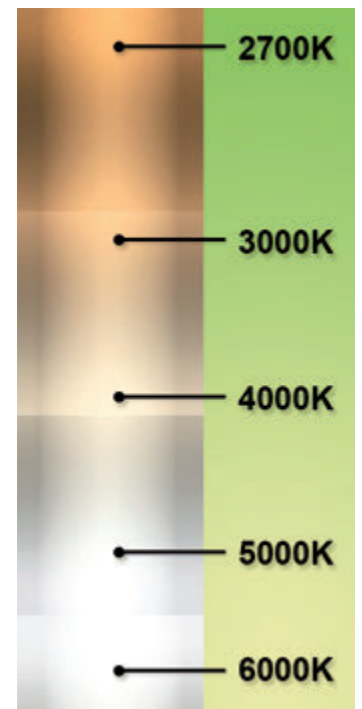
You can choose any of our Aluminum Channels for your custom LED linear lighting system. The only restriction is that RGBW LED strips don't fit inside Low Profile channels.

STEP 5 SELECT A DIMMER OR CONTROLLER

Lastly, decide how you want to dim or control the lights. Whether you need a wall dimmer, a remote, or a color changing controller, we can find the right solution for you.



KELVIN CHART (K)



LED STRIPS

ECONOMIC SINGLE COLOR STRIPS



**3W/ft SMD 3528
UL LED Strip**
Voltage: 12V DC
Brightness: 280 lm/ft
Max Run: 16 ft
Cuttable Unit: 1 in
3000K/5000K
Waterproof Available



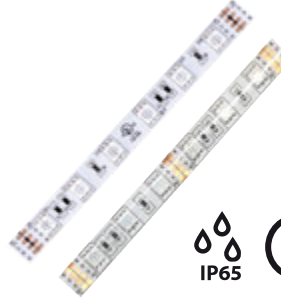
**4.5W/ft SMD 5050
UL LED Strip**
Voltage: 12V DC
Brightness: 360 lm/ft
Max Run: 16 ft
Cuttable Unit: 2 in
3000K/5000K
Waterproof Available



COLOR CHANGING STRIPS



2.2W/ft RGB LED Strip
Voltage: 12V/24V DC
Brightness: 155 lm/ft
Max Run: 16 ft
Cuttable Unit: 4 in (12V)
/ 8 in (24V)
Waterproof Available



4.5W/ft RGB LED Strip
Voltage: 12V/24V DC
Brightness: 300 lm/ft
Max Run: 16 ft
Cuttable Unit: 4 in (12V)
/ 4 in (24V)
Waterproof Available



**4 in 1 4.5W/ft
RGBW LED Strip**
Voltage: 24V DC
Brightness: 300 lm/ft
Max Run: 16 ft
Cuttable Unit: 5 in
3000K/5000K
Waterproof Available



**6W/ft SMD3535
RGB LED Strip**
Voltage: 24V DC
Brightness: 400 lm/ft
Max Run: 16 ft
Cuttable Unit: 2 in
Waterproof Available



**4W/ft Adjustable
CCT LED Strip**
Voltage: 24V DC
Brightness: 260 lm/ft
Max Run: 50 ft
Cuttable Unit: 4 in
**1800K-4000K/
2700K-6000K**



**110V 3.2W/ft
RGB LED Strip**
Voltage: 110V AC
Brightness: 120 lm/ft Max
Run: 165 ft
Cuttable Unit: 20 in
Waterproof Only



LED STRIPS

PREMIUM CRI 90 STRIPS



**1.5W/ft SMD 3528
UL LED Strip**
Voltage: 12V/24V DC
Brightness: 120 lm/ft
Max Run: 32 ft (12V)
/ 49 ft (24V)
Cuttable Unit: 2 in (12V)
/ 4 in (24V)
2200K/2400K/2700K/3000K
3500K/4000K/5000K/6000K
Red/Green/Blue/Amber
Waterproof Available



**2W/ft SMD 3014
UL LED Strip**
Voltage: 12V/24V DC
Brightness: 175 lm/ft
Max Run: 32 ft (12V)
/ 49 ft (24V)
Cuttable Unit: 2 in (12V)
/ 4 in (24V)
2700K/3000K
4000K/6000K
Waterproof Available



**3W/ft SMD 3528
UL LED**
Voltage: 12V/24V DC
Brightness: 220 lm/ft
Max Run: 32 ft (12V)
/ 49 ft (24V)
Cuttable Unit: 2 in (12V)
/ 4 in (24V)
1800K/2200K/2400K/2700K
3000K/3500K/4000K/5000K
6000K/Red/Blue/Pink
Waterproof Available



**4.4W/ft SMD 2835
UL LED Strip**
Voltage: 12V/24V DC
Brightness: 360 lm/ft
Max Run: 16 ft
Cuttable Unit: 2 in (12V)
/ 4 in (24V)
2700K/3000K/4000K
5000K/6000K



**5W/ft SMD 2835
UL LED Strip**
Voltage: 24V DC
Brightness: 404 lm/ft
Max Run: 16 ft
Cuttable Unit: 3 in
3000K/4000K
6000K/Blue



**7W/ft SMD 2835
UL LED Strip**
Voltage: 24V DC
Brightness: 1,000 lm/ft
Max Run: 16 ft
Cuttable Unit: 2 1/2 in
2700K/3000K
4000K/5700K



**Spotless SMD 2216
UL LED Strip**
Voltage: 24V DC
Wattage: 3W/ft / 5W/ft / 7W/ft
Brightness: 320 lm/ft (3W)
/ 480 lm/ft (5W) / 560 lm/ft (7W)
Max Run: 49 ft
Cuttable Unit: 3/4 in
2700K/3000K/4000K/5700K



LED STRIPS

110V LED STRIPS



**1.1W/ft SMD 3528
ETL LED Strip**
Voltage: 110V AC
Brightness: 137 lm/ft
Max Run: 328 ft
Cuttable Unit: 20 in
3000K/6000K
Waterproof Only



**3.5W/ft SMD 5730
ETL LED Strip**
Voltage: 120V AC
Brightness: 350 lm/ft
Max Run: 164 ft
Cuttable Unit: 20 in
3000K/6000K
Waterproof Only



**2W/ft SMD 3014
ETL LED Strip**
Voltage: 110V AC
Brightness: 182 lm/ft
Max Run: 164 ft
Cuttable Unit: 20 in
3000K/4000K/6000K
Waterproof Only



**4W/ft SMD 5050
ETL LED Strip**
Voltage: 110V AC
Brightness: 285 lm/ft
Max Run: 100 ft
Cuttable Unit: 19 in
3000K/5000K
Red/Green/Blue
Waterproof Only

ULTRA FLEX LED STRIPS



**2.2W/ft SMD 2835
Zig Zag LED Strip**
Voltage: 12V DC
Brightness: 200 lm/ft
Max Run: 16 ft
Cuttable Unit: 2 in
3200K/6000K



**2W/ft SMD 335
Side Emitting LED Strip**
Voltage: 12V DC
Brightness: 160 lm/ft
Max Run: 32 ft
Cuttable Unit: 2 in
3000K/6000K



**4.5W/ft SMD 335
Side Emitting LED Strip**
Voltage: 12V DC
Brightness: 300 lm/ft
Max Run: 16 ft
Cuttable Unit: 2 in
3000K/6000K
Waterproof Available

LED STRIPS

OUTDOOR LED STRIPS



**0.73W/ft SMD 2835
Long Run UL LED Strip**
Voltage: 24V DC
Brightness: 51 lm/ft
Max Run: 164 ft
Cuttable Unit: 4 in
2700K/3000K/4000K/6000K



**1W/ft SMD 3014
Low Light UL LED Strip**
Voltage: 12V DC
Brightness: 85 lm/ft
Max Run: 65 ft
Cuttable Unit: 6.6 in
3000K/6000K



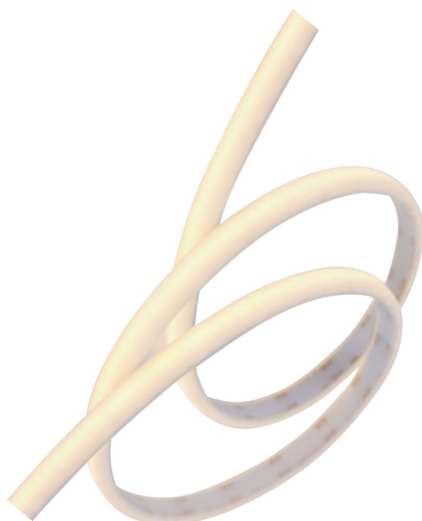
**1.5W/ft SMD 3528
Accent UL LED Strip**
Voltage: 12V/24V DC
Brightness: 120 lm/ft
Max Run: 32 ft (12V)
/ 49 ft (24V)
Cuttable Unit: 2 in (12V)
/ 4 in (24V)
2700K/3000K/4000K/6000K
Red/Blue/Amber
IP68 Available



**3W/ft SMD 3528
UL LED Strip**
Voltage: 12V/24V DC
Brightness: 360 lm/ft
Max Run: 16 ft
Cuttable Unit: 2 in (12V)
/ 4 in (24V)
2700K/3000K/4000K/6000K
Red/Blue/Pink



NEON LED STRIPS



**1.5W/ft SMD 2835
Neon UL LED Strip**
Voltage: 24V DC
Brightness: 117 lm/ft
Max Run: 50 ft
Cuttable Unit: 2 in
3000K

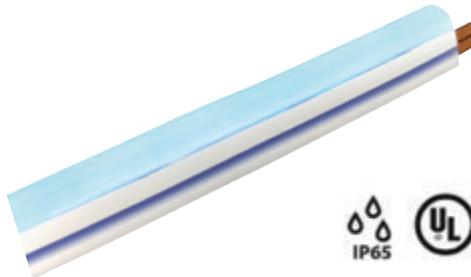


**3W/ft SMD 2835
Neon UL LED Strip**
Voltage: 24V DC
Brightness: 270 lm/ft
Max Run: 50 ft
Cuttable Unit: 2 in
3000K/4000K/5000K



LED STRIPS

NEON FLEX STRIP



2.8W/ft Neon Flex

UL LED Strip

Voltage: 12V/24V DC

Max Run: 16 ft (12V)

/ 32 ft (24V)

Cutable Unit: 1 1/16 in (12V)

/ 2 1/8 in (24V)

3000K/5000K/Red/Green/

Blue/Yellow/Pink/Orange/Purple

Intelligent RGB Available

Waterproof Only

LED Neon Flex Strips is the new innovated technology replacing the traditional glass neon tube. Anyone can make customizable signs or illuminate borders easily. No soldering and special tools needed, everyone can be a master of neon arts.



NEON FLEX ACCESSORIES



End Connector

Make solder-less section to section connection



In-Line Connector

Make an inline splitting Connection from Neon Flex



Aluminum Profile

Make durable and straight Installation for Neon Flex



Slide-in Bracket

Provide a waterproof end cap for Neon Flex with profiles



Slide-in O Ring Bracket

Provide a waterproof end cap for Neon Flex with profiles



Round Corner

Make a round cover joint for Neon Flex aluminum profiles



Waterproof End Cap

Provide a waterproof end cap for Neon Flex with profiles

NEON COVER

Neon Cover

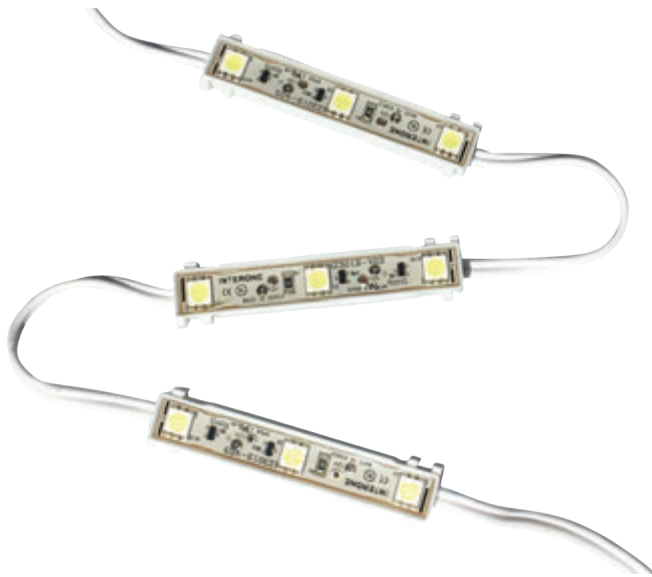
Insert almost any LED Strip to create a spotless neon effect



MODULES

SINGLE COLOR MODULES

LED Modules are generally used for signage. They are great for channel letters, light boxes, window displays, or for any type of decoration. All modules are suitable for outdoor use. We have a variety of wattages for different applications.



Single Color LED Module

0.72W = 75 Lumens

3000K/6000K/Red

Green/Blue/Yellow



Mini LED Module

0.24W = 25 Lumens

3000K/6000K



High Power LED Module

1.5W = 150 Lumens

3000K/6000K

COLOR CHANGING MODULES

Color Changing LED Module

0.72W = 34 Lumens

RGB

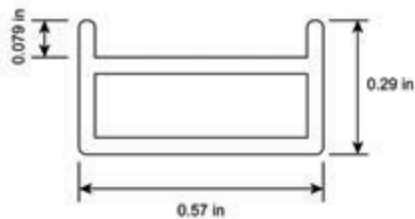


ALUMINUM CHANNEL

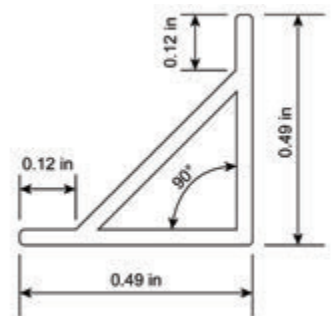
NO COVER CHANNELS



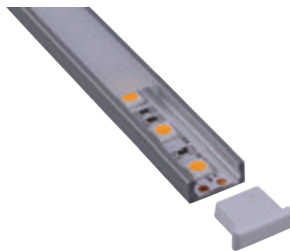
1/2" Simple Flat Channel



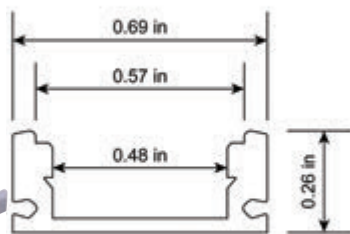
1/2" Simple Angled Channel



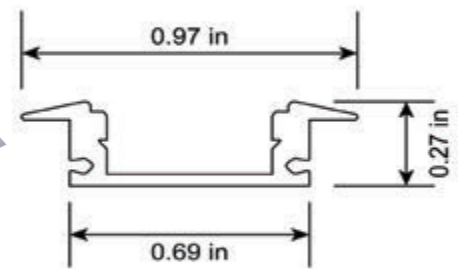
SLIM LED CHANNELS



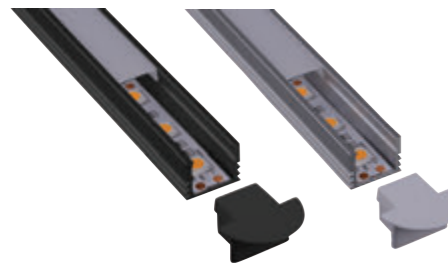
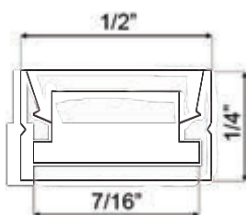
5/8" Low Profile Channel



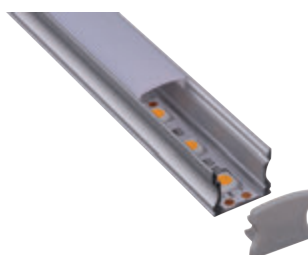
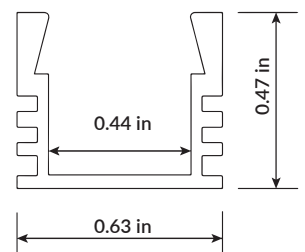
7/8" Low Profile w/ Trim Channel



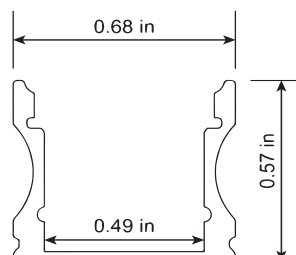
1/2" Mini Slim Channel



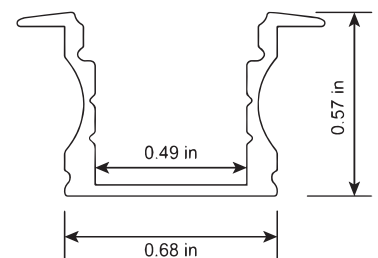
5/8" Deep Milky Channel
Comes in Black



11/16" Curve Channel

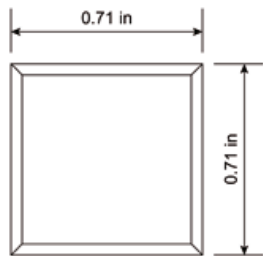


1" Recessed Curve Channel

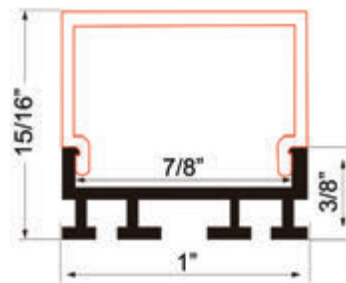


ALUMINUM CHANNEL

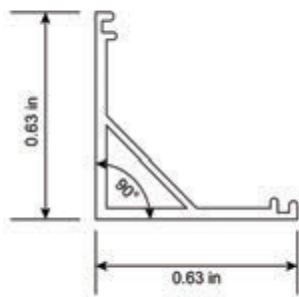
SPOTLESS LED CHANNELS



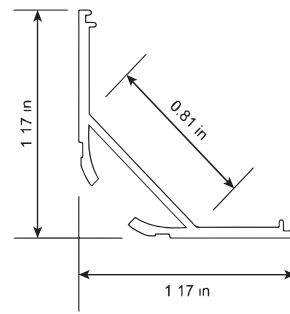
**5/8" Square
Milky Channel**



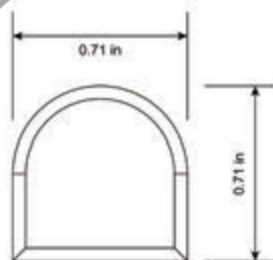
**1" Square
Milky Channel**



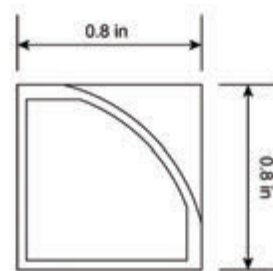
**5/8" Angled Full
Cover Channel**



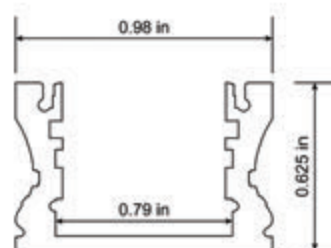
**13/16" Angled Full
Cover Channel**



**3/4" Round
Milky Channel**



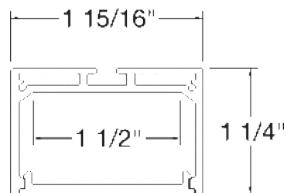
**3/4" Angled
Milky Channel**



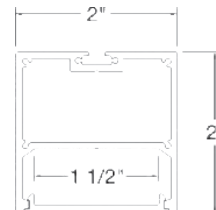
**1" Wide
Deep Channel**

ALUMINUM CHANNEL

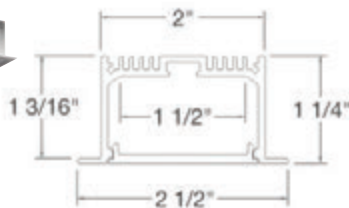
ARCHITECTURAL CHANNELS



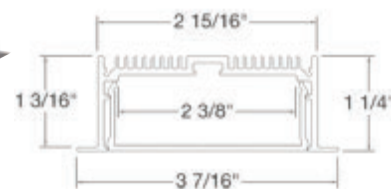
1 7/16" Surface Mount Channel



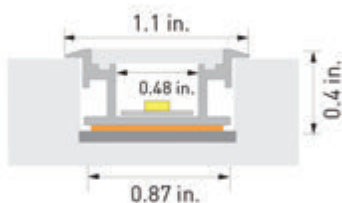
2" x 2" Surface Mount Channel



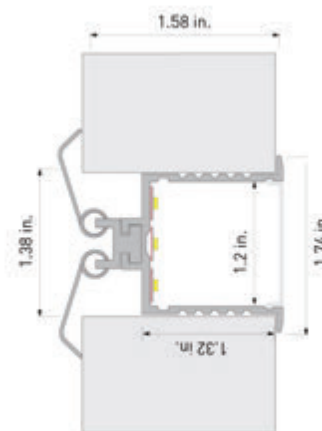
2 1/2" Wide Recessed Channel



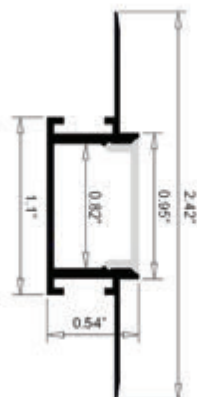
3 7/16" Wide Recessed Channel



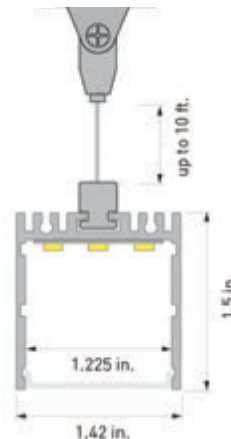
1.1" In-Ground Channel



1.74" Wall Mount Channel



0.95" Mud-In Channel



1.42" Pendant Channel

COLOR CHANGING CONTROLLERS

MI LIGHT SYSTEM

The Mi Light System offers a complete solution for color changing lights. The WiFi module enables the entire system to be controlled with an app. Alexa and Google Assist are also compatible with this system.



4 Zone Dimmer Remote



4 Zone RGB +W Remote



4 Zone RGB +CCT Remote



8 Zone RGB +CCT Remote



2.4GHz WiFi Gateway



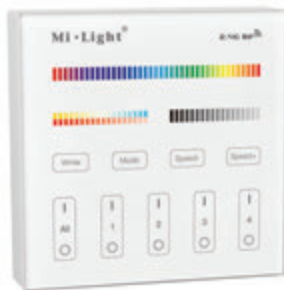
12V/24V 4 Zone Receiver
RGB/RGBW = 10A Load
Single Color = 10A Load



12V/24V 5 in 1 8 Zone Receiver
RGB+CCT = 15A Load



12V/24V Mini WiFi/IR Controller
RGBW = 4A Load



4 Zone Wall Mount Controller
Comes in RGBW and RGB+CCT
Powered by 120V or AAA Batteries



8 Zone Wall Mount RGB+CCT Controller
Powered by 120V or AAA Batteries

MI LIGHT FIXTURES

Color Changing Garden Light

9W = 700 Lumens
15W = 1,200 Lumens
25W = 2,000 Lumens
RGB+CCT (2700K-6500K)



Color Changing Flood Light

50W = 4,000 Lumens
RGB+CCT (2700K-6500K)



Color Changing IP68 Underwater Light
27W = 2,000 Lumens
RGB+CCT (2700K-6500K)

COLOR CHANGING CONTROLLERS

WALL MOUNT LED CONTROLLERS

**12V/24V Vertical
Wall Mount
RGB Controller**
RGB = 12A Load
Finishes in Black and
White



**12V/24V Vertical
Wall Mount
RGBW Controller**
RGBW = 16A Load
Finishes in Black and
White



RF CONTROLLERS

**12V/24V
Mini Dimmer**
Single Color = 6A Load
Barrel Connectors
Available



**12V/24V RGB
Mini Controller**
RGB = 6A Load
Wire Connectors
Available



**12V/24V RGB
Music Controller**
RGB = 15A Load
Music Controls
the Light



**12V/24V RGB
High Power Controller**
RGB = 30A Load



**9V/12V/24V 2 in 1
RGBW+CCT Controller**
RGB+CCT = 15A Load
Connects via Bluetooth
and Wifi

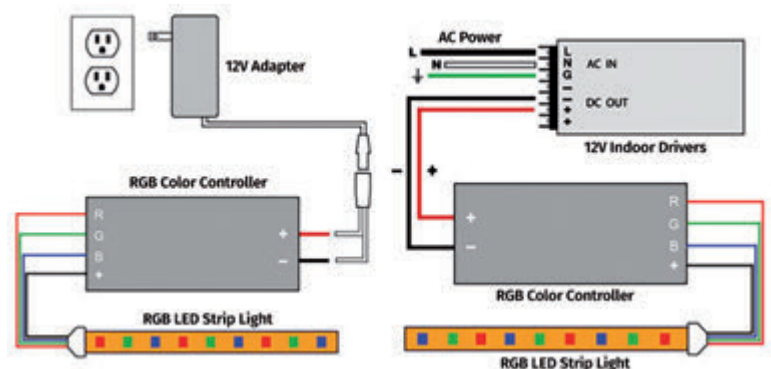


**12V/24V RGBW
Mini WiFi Controller**
RGBW = 6A Load
WiFi compatible via
phone app



12V/24V Color Changing LED Strip Connections

An LED Power Supply is needed to provide voltage that is suitable for color changing controllers and LED strips. Color changing controllers go in between a LED power supply and a LED Strip. Every color changing strip requires a color changing controller. A color changing controller is also dimmer.



COLOR CHANGING CONTROLLERS

AMPLIFIER

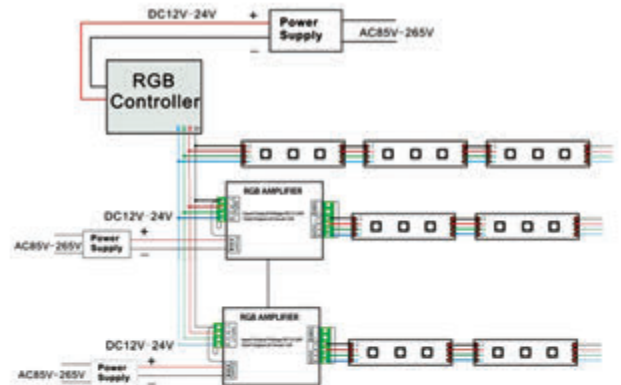


**12V/24V RGB
Amplifier**
RGB = 30A Load



**12V/24V RGBW
Amplifier**
RGBW = 24A Load

Amplifiers are used to increase the load capacity of Color Changing Controllers. We recommend to install amplifiers parallel to the LED Strip.



DMX CONTROLLERS



**12V/24V RGB/W
DMX Decoder**
RGB = 12A Load
RGBW = 16A Load



**12V/24V RGB
DMX Decoder**
RGB = 15A Load



**12V/24V 5 CH
DMX Decoder**
5 x 8A = 40A Load

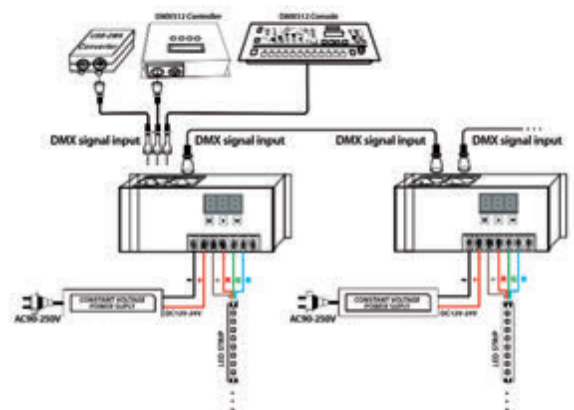


**12V/24V 12 CH
DMX Decoder**
12 x 5A = 60A Load



**12V/24V 24 CH
DMX Decoder**
24 x 4A = 96A Load

DMX Decoders are used to integrate any 12V/24V Color Changing or Single Color LED product to existing DMX lighting systems.



POWER SUPPLIES

ADAPTERS



12W Adapter
5V/12V



72W Adapter
12V/24V



150W Adapter
12V/24V

60W Adapter
12V/24V



96W Adapter
12V/24V



INDOOR

**Small LED
Power Supply**
12W - 24W
36W - 60W
12V/24V



12W



24W



36W/60W

**Meanwell Switching
Power Supply**
100W - 150W
200W
12V/24V



100W



150W



200W

**Meanwell
Integrated Fan
Power Supply**
350W - 600W
12V/24V



350W



600W

POWER SUPPLIES

ELECTRONIC DIMMABLE

Electronic LED Triac Dimmable Driver

12W 12V/24V - 24W 12V
48W 12V - 60W 24V
66W 12V - 80W 24V
84W 12V - 100W 24V



12W



24W/48W



60W/66W/80W



84W/100W

J-Box Electronic LED Triac Dimmable Driver

50W - 100W
200W
12V/24V



50W



100W/200W

100-277V Phase Cut LED Triac Dimmable Driver

30W - 60W - 100W
120W - 150W
200W - 300W
12V/24V



30W/60W



100W/120W/150W



200W



300W

Round Electronic LED Triac Dimmable Driver

9W - 20W - 30W
40W - 60W
12V/24V



9W



12W/20W



30W/40W/60W

POWER SUPPLIES

MAGNETIC DIMMABLE

Magnetic LED Dimmable Driver

20W - 50W
60W - 75W - 100W
150W - 200W
300W - 600W
12V/24V



20W/50W



60W/75W
100W



150W/200W
300W/600W

0-10V DIMMABLE

0 - 10V Meanwell LED Dimmable Driver

100W - 150W
240W - 320W
12V/24V



100W/150W



240W



320W

OUTDOOR

Outdoor Power Supply

30W - 60W
100W - 150W
12V



30W



60W/100W



150W

Meanwell Class 2 Power Supply

20W - 60W
100W - 150W
12V/24V



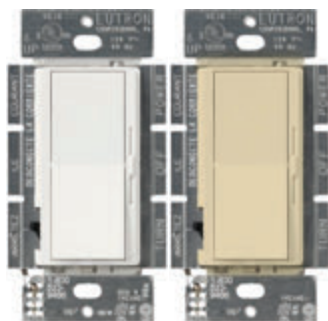
Meanwell Outdoor Power Supply

100W - 150W
240W - 320W
12V/24V



LIGHTING CONTROLLERS

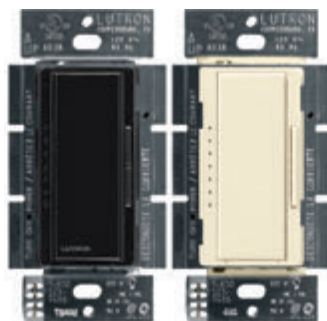
DIMMERS SERIES



150W 3 Way LED/CFL Diva Dimmer

Great for LED Bulbs
and Recessed Lights

Finishes in White,
Black, Almond,
Light Almond, and More



150W 3 Way LED/CFL Maestro Dimmer

Great for Magnetic
Transformers

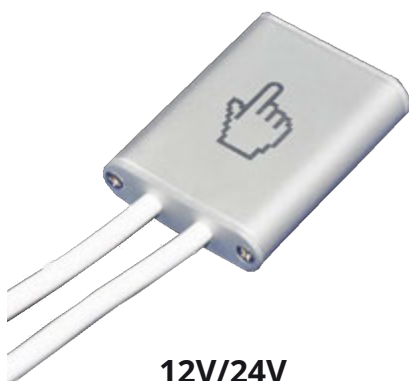
Finishes in White,
Black, Almond,
Light Almond, and More



0 – 10V Rocker and Slider Dimmer

Suitable for 0-10V
Lights and Drivers

LOW VOLTAGE DIMMERS AND SWITCHES



12V/24V Touch Dimmer

Single Color = 6A Load



12V/24V Mini RF Remote Dimmer

Single Color = 6A Load



12V/24V Knob Dimmer

Single Color = 6A Load



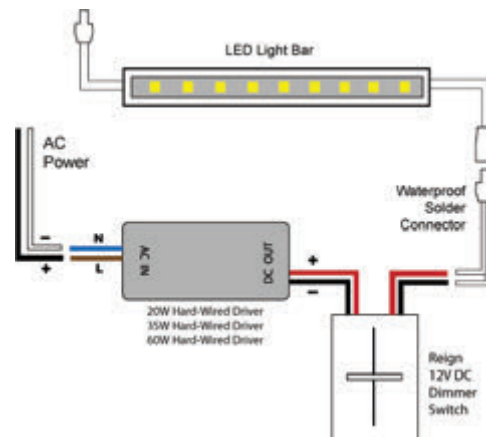
12V/24V Rocker Switch

Single Color = 6A Load



12V/24V IR Sensor Switch

Single Color = 3A Load



LIGHTING CONTROLLERS

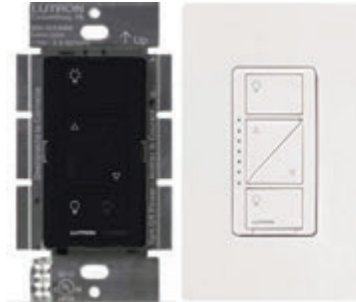
CASÉTA SERIES



Caséta Remotes
Compatible w/ all
Caséta Products
Available in Black
and 3 Scenes



**Plug-in Caséta
Lamp Dimmer**
100W CFL/LED Load
300W Halogen/
Incandescent Load



**LED Caséta
Wireless Dimmer**
150W CFL/LED Load
600W Halogen/
Incandescent Load



**Wi-Fi Caséta
Smart Bridge Module**
5V DC Input
Compatible w/ App

WIFI SERIES



WiFi Switch



**150W 3 Way LED/CFL
WiFi Dimmer**



WiFi Receptacle



WiFi USB Receptacle

All items in the WiFi series works with Amazon Alexa, Google Assistant, and its own phone app. It uses your existing router and internet connection to link up with other systems. There's no need to purchase or set up a hub. App includes scene control, scheduler, multiple device control, and energy monitoring. The app is compatible with Android and iOS.



Phone App Available

LIGHTING CONTROLLERS

SENSORS SERIES



**PIR In- Wall
Occupancy/Vacancy
Sensor**
Up to 700 Sq. Ft Range



**360° PIR High Voltage
Ceiling Mount
Occupancy Sensor**
Up to 1200 Sq. Ft Range



**360° PIR High Voltage
1/2" Knuckle Mount
Occupancy Sensor**
Up to 800 Sq. Ft Range



Power Packs
0-10V Dimming Available



**On / Off Microwave
1/2" Knuckle Mount
Motion Sensor**
49 Ft Radius Range



**In- Wall Humidity
Sensor**
1/6 HP, 3 Amp Fan Load



**12V/24V
Low Voltage PIR
Motion Sensor**
26 Ft Radius Range

LUTRON TITLE 24



**Wireless Ceiling
Daylight Sensor**
Works with wireless
Lutron systems
Light range 0 to 1600 lx



**Wireless Ceiling PIR
Occupancy/Vacancy Sensor**
Works with wireless
Lutron systems
Up to 676 Sq. Ft Range



**Vive Wireless
Dimmer**
Up to 600W Load



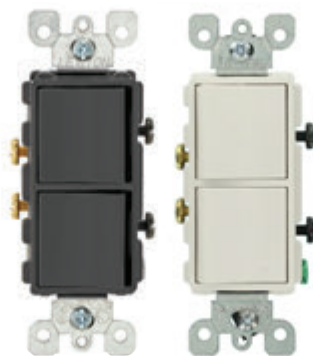
**Vive 0-10V
Dimming PowerPak**
8A Switch Rating

ELECTRICAL

SWITCHES



Rocker Switch
Single Pole and 3 way
15A Load
Finishes in White and Black



Stack Rocker Switch
Single Pole and 3 way
15A Load
Finishes in White and Black



Timer Switch
Up to 4 Hour Delay
15A Load

RECEPTACLES



Floor Pop Up
15A Load



GFCI Outlet
15A Load



Outlet
15A Load



Outlet w/ USB Charger
5VDC, 4.8A Output
15A Load

WALL PLATES



Decora Wall Plates
Multiple Finishes and
Gangs Available



Waterproof Wall Plate
Finishes in Gray, White,
and Bronze



Outdoor Bubble Cover
Comes in Single
and 2 Gang

ACCESSORIES

STRIP ACCESSORIES



98' Double Sided Tape
Gray/Clear



Screw-in Barrel Connectors
Female/Male



Barrel Connectors w / Wire
Female/Male



Low Voltage Strip Coupling
Single Color/RGB



Barrel Connector to Strip Coupling



Line Voltage Strip Input Connector



Line Voltage Strip to Strip Coupling



Line Voltage Strip L and T Coupling

WIRES



2 Wire for Single Color
18AWG*
16AWG
14AWG
*Available in Shielded



4 Wire for RGB
22AWG*
18AWG
16AWG
*Available in Shielded



6 Wire for RGBW
22AWG
18AWG*
*Available in Shielded



2 Wire for Landscape
14AWG
12AWG
10AWG

SOCKETS



T8 Socket



E12 to E26 Adapter



G9 Socket



GU10 Socket




MR16 Socket


ADVANCE LED SUPPLY

Advance LED Supply is at the cutting edge of LED lighting. Our solution-oriented product lines are curated to deliver the best LED has to offer. We carry diverse lines of LED Strips, commercial, residential, industrial, landscape lights, and more. Our team of LED technicians provide expert advice for any project big or small.

Store Address

 5404 San Fernando Rd. Glendale, CA 91203

 (818) 649-1999  (818) 649-1998

 sales@advanceledsupply.com

 www.advanceledsupply.com

Advance LED Supply reserves the right to revise product appearance, dimensions, and technical data, but does not undertake responsibility for the accuracy of the content.

Advance LED Supply ensures that the contents of this catalog have been carefully checked, so we will not assume responsibility for any loss.

Recipient hereby acknowledges that Advance LED Supply Lighting Catalog, which it has received, is a confidential trade secret for Advance LED Supply, and it may not be disclosed to any third party whomsoever without first obtaining the prior written permission of Advance LED Supply.