

6" SNAPTRIM JBOX DOWNLIGHT



And just like that... the recessed can is gone. EnVision LED has developed a 4" and 6" LED Downlight that eliminates the need for a can. The junction box is built into the fixtures and is IC Rated. By reducing material cost and installation time, the EnVision SnapTrim is the ideal retrofit or new construction recessed lighting solution yet. Simply cut a hole in the ceiling, power the fixture to the wall switch, and "snap" the trim flush.

Applications:

- Recessed Downlighting
- New Construction or Remodel

Product Information:

- Easy install spring clips with J-Box built in eliminates can
- Ready to replace existing 65/75W halogens
- Dimmable: Compatible with most dimmers down to 5%
- IC and Airtight rated fixture
- Suitable for wet location (UL Listed)
- 5 Year Limited Warranty

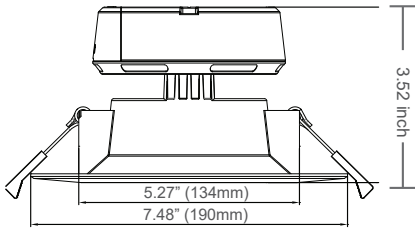
THE SNAP TRIM™

CUT. CONNECT. SNAP.

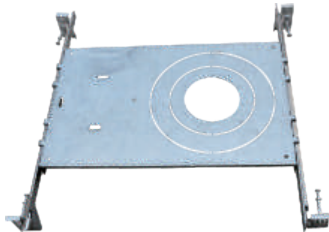
Type	Model	Volt	Watt	Lumen	Color	CRI	Beam Spread
6INCH	LED-DLJBX-6B-9W-27K	120V	9W	700	Soft- 2700k	>90	100°
6INCH	LED-DLJBX-6B-9W-30K	120V	9W	700	Warm- 3000k	>90	100°
6INCH	LED-DLJBX-6B-9W-40K	120V	9W	700	Cool- 4000k	>90	100°
6INCH	LED-DLJBX-6B-9W-50K	120V	9W	700	Day- 5000k	>90	100°

6" SNAPTRIM JBOX DOWNLIGHT

DIMENSIONS AND DIMMING



OPTIONAL ACCESSORIES



Item #: CUNV-NC-ICAT

New Construction Plate

Makes new construction installation easier. Universal plate compatible for 2", 4", 6" trims with J-Boxes.

DIMMER COMPATIBILITY

Brand	Series	Model	Load	Dimmability
Lutron	Ariadni	AYCL-153P	150W	OK
	Diva	DV-600PR	600W	OK
	Diva	DVCL-153P	150W	OK
	Maestro	MACL-153MH	600W	OK
	Maestro Wireless	MRF2-6CL	150W	OK
	Rotary	D-600P	600W	OK
	Electronic(ELV)	NTELV-300P	600W	OK
	Skylark	S-600P	600W	OK
	Skylark Contour	CT-600P	600W	OK
	Skylark Contour	CTCL-153P	150W	OK
	Toggler	TG-600P	600W	OK
Toggler	TGCL-153P	150W	OK	
Leviton	Sureslide	6633	600W	OK
	Sureslide Decora	6674	600W	OK
	Trimatron	6672	600W	OK
	Sureslide	6613	600W	OK
Legrand	Adorne	DLV703	700W	OK
	Harmony	H703PTW	700W	OK
Cooper	Aspire	9530	1000W	OK
	Devine	DAL03P	300W	OK

List reflects suggested dimmers, but is not limited to the provided models.

FEATURES

Junction Box

Integrated J-Box for direct wire eliminated recessed can

Meets Code

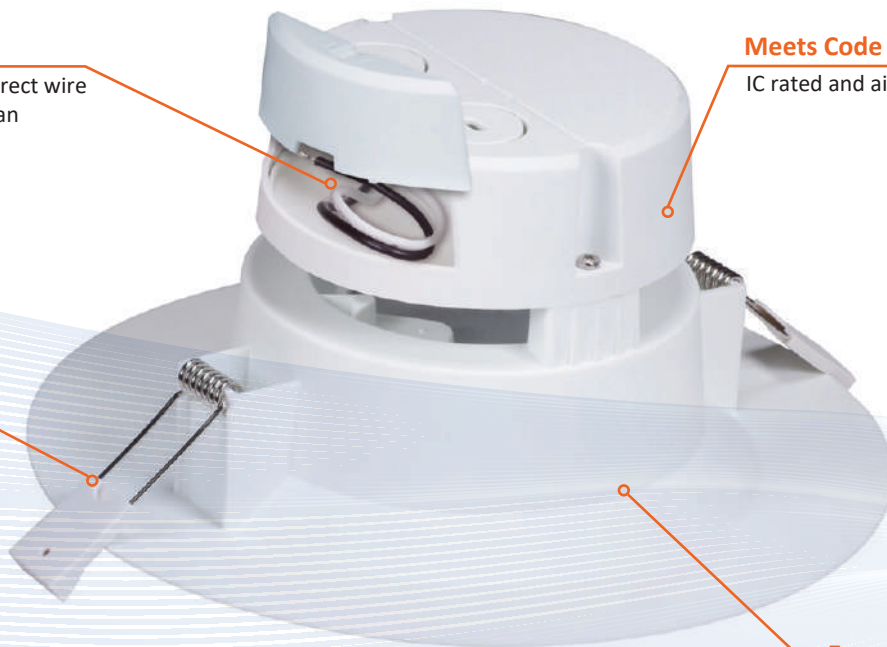
IC rated and airtight fixture

Tension Clip

Allows for easy flush installation

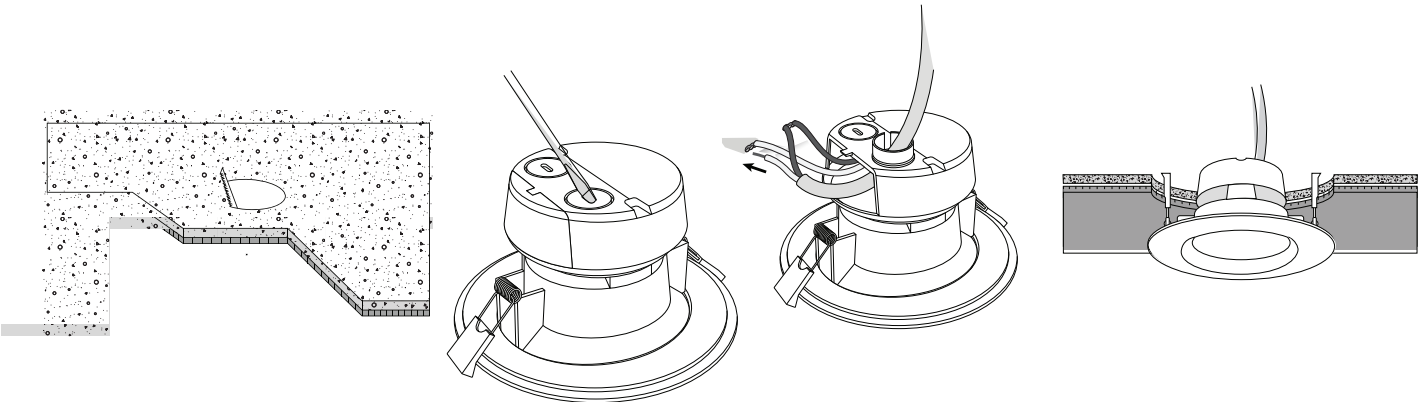
Easy Installation

Includes a ceiling bracket without the need of a surface mount kit



6" SNAPTRIM JBOX DOWNLIGHT

INSTALLATION



1. Cut a 4" hole into the existing drywall
2. Remove convenient knock-out
3. Hardwire electricity into the built in J-Box
4. Snap fixture into the cut-out ceiling

PHOTOMETRICS

