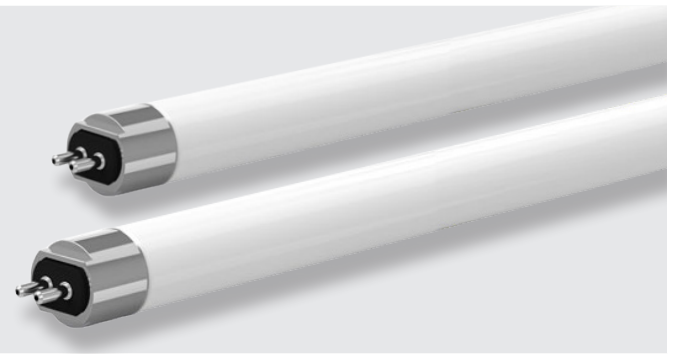


Project Name:	Notes:	Date:	Type:
---------------	--------	-------	-------

**DESCRIPTION**

Our 4-foot T5 Type B (ballast bypass) glass tube is perfect for retrofitting existing fluorescent lamps for more energy savings. Available in 24W, and are double-ended for wiring.

Ideal use for office spaces, warehouses, hotels, restaurants, and schools.



**CONSTRUCTION**

Made of high-quality glass. Standard frosted lens (clear lens available with custom order). 100% Mercury Free and 100% Lead Free.

**ELECTRICAL**

T5 Type B—(ballast removal) AC line input. For use with double-ended wiring schemes.

**RETROFIT EASILY**

Bypass the ballast with easy 4' LED T5 tube retrofit. Produces uniform light output that is consistent from end-to-end.

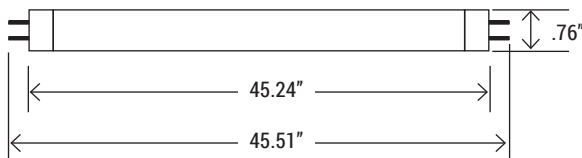
**DIMMING**

Non-dimmable and not compatible with ballast.

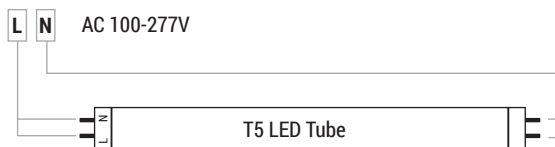
**LISTING**

UL Listed, FCC, RoHS, CE

**DIMENSION**



**WIRING DIAGRAM**



**TECHNICAL SPECIFICATION**

WATTAGE	24W
LUMENS	3,668 lumens / 3,698 lumens
EFFICACY	up to 145 lm/W
VOLTAGE	120V-277V
POWER FREQUENCY	50/60 Hz
CCT	4000K / 5000K
CRI	80+
BEAM ANGLE	180°
LENS TYPE	Frosted
WORKING TEMP.	-4°F - +131°F
STORAGE TEMP.	-40°F - +140°F
IP RATING	IP20
DIMMABLE	Non-dimmable
POWER FACTOR	>0.9
THD	≤20%
WARRANTY	5 year limited



**MODEL NUMBER(S)**

MODEL#	WATTS	LUMENS	LM/WATT	CCT	CRI	LENS	VOLTAGE	PORTOR CAT#
NT5S-DQ24W-4GN01	24W	3,668	143	4000K	80+	Frosted	120V-277V	PT-T5-4FB-24W- 4K-F
NT5S-DQ24W-4GR01		3,698	145	5000K				PT-T5-4FB-24W- 5K-F