



# 1" LED Canless Downlight: SnapTrim-Line

## 5-CCT Selectable



### Detail Specification:

- Finish: White, Black, Round, Square
- IP54 Wet Location Rated
- Beam Angle: 38° standard
- Chip: COB Chip, R9 >50, CRI >90
- 3 Step MacAdam Ellipses
- Operating Temperature: -40° - 114° F
- Lens: Clear COB
- Average life (L70) of 50,000 hours

### Applications:

- General Recessed Lighting
- Residential & Multifamily
- Office and Meeting Rooms
- Education, Healthcare, Retail, Hospitality

### Product Information:

- 5-CCT Selectable: 27/30/35/40/50K
- Various sizes, finishes, and trims available
- Standard white round trim included: optional trims available
- Metal housing and trim for better heat dissipation
- Optional emergency backup available: delivers full lumens in EM mode
- SnapTrim Canless: Spring clips with remote j-box eliminates can

### Driver Options:

- 120V Triac Dimmable
- Built in 2.5Kv Surge Protector
- Flicker Free

### Mounting & Installation:

- Cut Out Dimension: 2-1/8"
- Optional new construction plate available
- This fixture does not fit into a recessed can
- No housing needed in remodel applications, tension clips mount into 1/2" to 1.5" thick ceiling
- Can be removed from below the ceiling for service or replacement
- Pre-wired junction box with circuit wiring built in (3 in/ 3 out)

### Certifications:

- ETL Listed for USA and CA
- Energy Star Certified
- CA Title 24 JA8-2022 CEC Listed
- 5 Year Limited Warranty
- FCC CFR 47, GCC Part 15, Subpart B:2017
- IC Rated and ASTM-E283 Air-Tight

**Series** **Beam Angle** **Emergency**  
**LED-DLJBX-1RG-7W-5CCT-WH-R =**  
1" Downlight – White Round Trim

**(Blank)** **(Blank)**  
38° Degree **EMB**  
**24D** Emergency  
24° Degree Backup

### Optional Accessories (Order Separately)

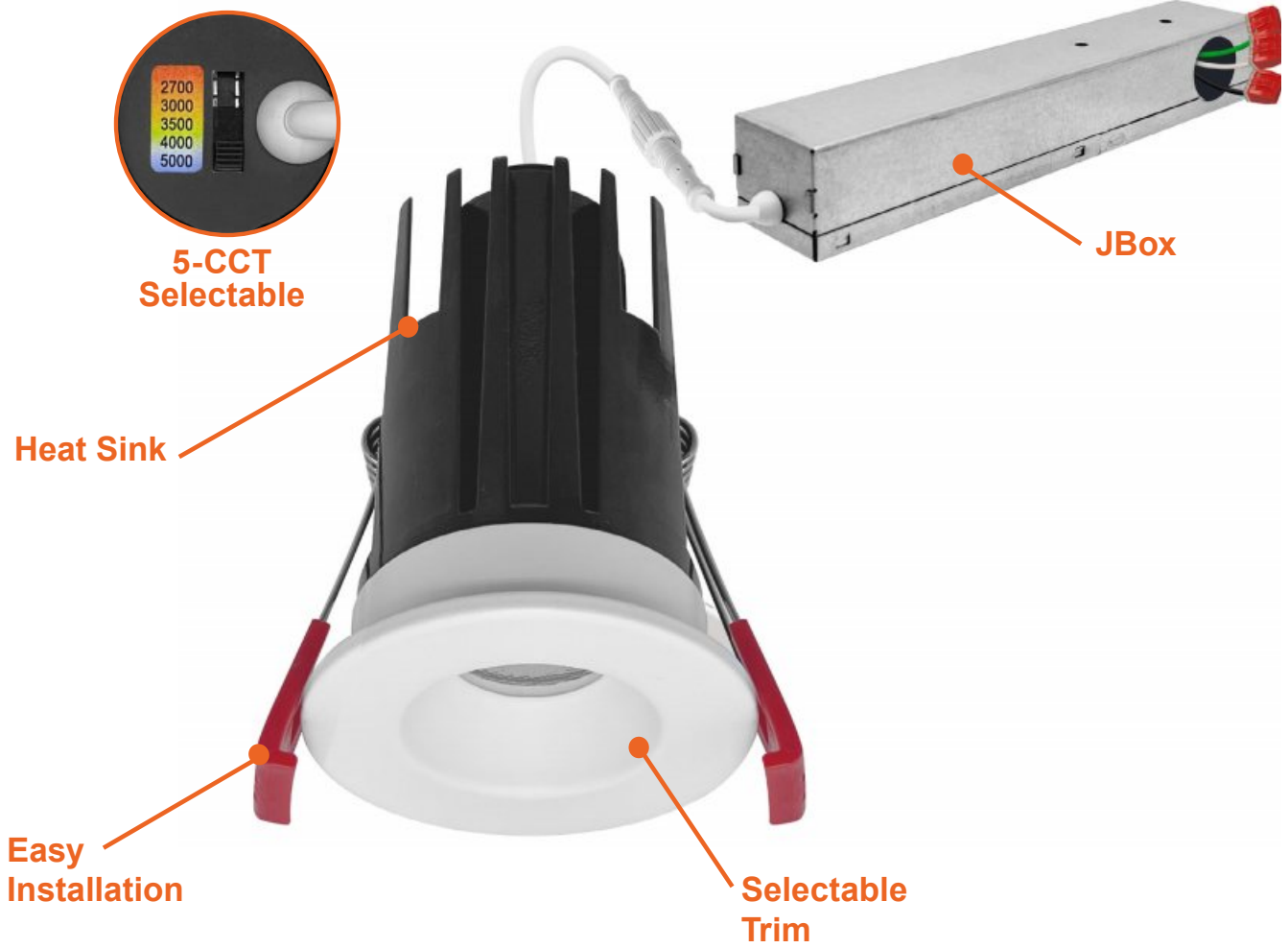
Trim Options	New Construction Plates	Extension Cables	Emergency Backup <sup>1</sup> (field install)	Optics
<b>DLJBX-1-TRIM-WH-SQ</b> White Square	<b>CUNV-NC-ICAT-7H</b> Universal Plate	<b>JBX-EXT-6'-2PIN</b> 6' Extension	<b>LED-EMB-15W -HV-0/10V-2P</b> Up to 14W fixtures	<b>OPTIC-30X12 -24D</b> Field Installable
<b>DLJBX-1-TRIM-BLK-R</b> Black Round	with hanging bars (Round fixtures only)	<b>JBX-EXT-10'-2PIN</b> 10' Extension	<b>LED-EMB-25W -HV-0/10V-2P</b> Up to 24W fixtures	24° Degree Lens
<b>DLJBX-1-TRIM-BLK-SQ</b> Black Square	<b>CUNV-JBX-RI-XL</b> Universal Rough In Plate Extra long (Round fixtures only)	<b>JBX-EXT-12'-2PIN</b> 12' Extension		

1. Field installable.  
Lasts 90 minutes.

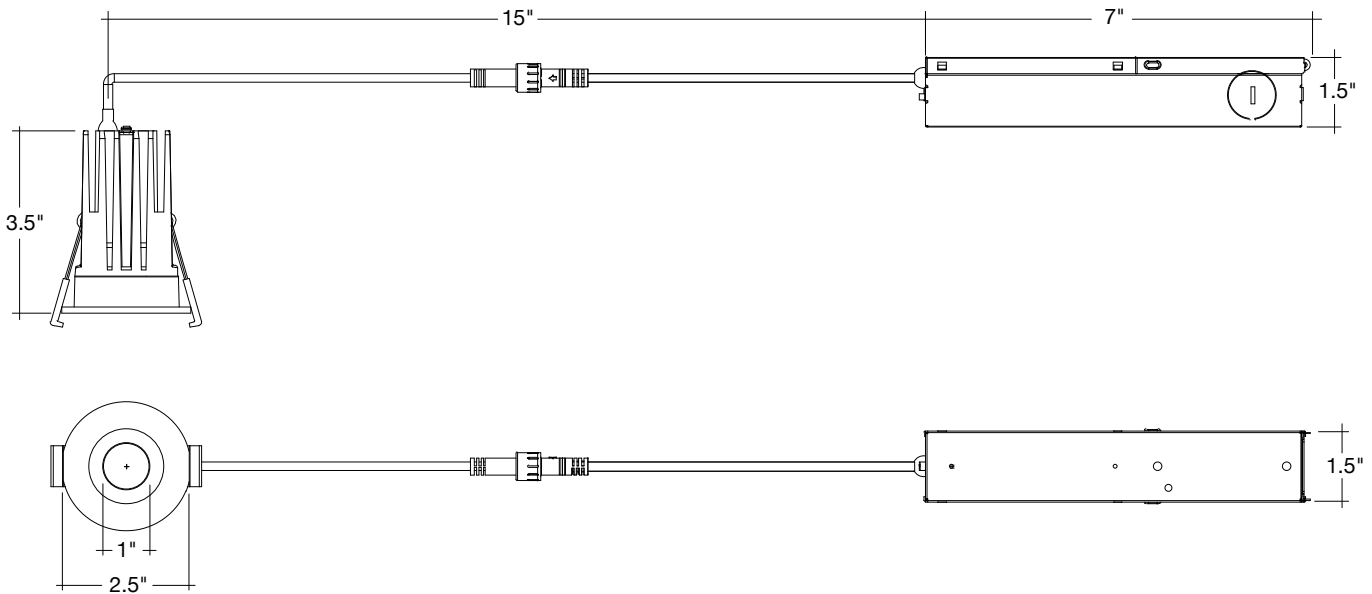
Specs and model numbers are subject to change with or without notice.

# 1" LED Canless Downlight: SnapTrim-Line

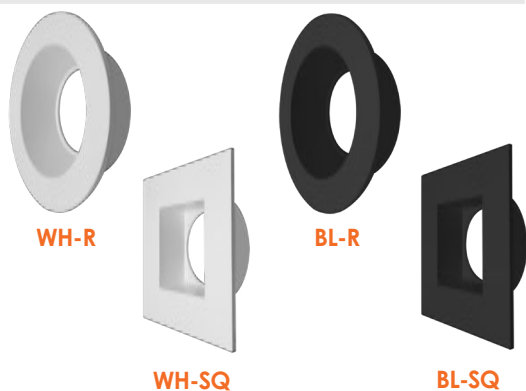
3-CCT Selectable



## DIMENSIONS



# 1" LED Canless Downlight: SnapTrim-Line 3-CCT Selectable



WH-R

BL-R

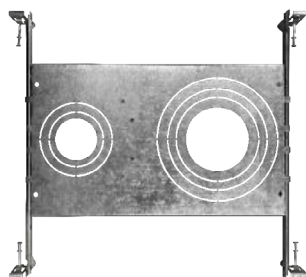
WH-SQ

BL-SQ



**JBX-EXT**

6' / 10' / 12' Extension Cable



**CUNV-NC-ICAT-7H**

Universal Pre-Mounting Plate

13 7/8" x 15 1/8"



**CUNV-JBX-RI-XL**

7" x 26"



**LED-EMB-15W-HV-0/10V-2P**

**LED-EMB-25W-HV-0/10V-2P**



**OPTIC-30X12-24D**

Model	Voltage	Watts	Lumens	Color	CRI
LED-DLJBX-1RG-7W-5CCT-WH-R	120V	7w	550	27/30/35/40/50K	>90

## TRIMS

Accessory	Description
DLJBX-1-TRIM-WH-R	1' White Round Smooth Trim (Included)
DLJBX-1-TRIM-BL-R	1' Black Round Smooth Trim
DLJBX-1-TRIM-WH-SQ	1' White Square Smooth Trim
DLJBX-1-TRIM-BL-SQ	1' Black Square Smooth Trim

## EXTENSION CABLE

Accessory	Description
JBX-EXT-6'-2PIN	6' Extension Cable for fixture to J-Box
JBX-EXT-10'-2PIN	10' Extension Cable for fixture to J-Box
JBX-EXT-12'-2PIN	12' Extension Cable for fixture to J-Box

## CONSTRUCTION PLATES

Accessory	Description
CUNV-NC-ICAT-7H	1" 2"3" 3.5" 4" 5" 6" Universal Pre-Mounting New Construction Plate (Round fixtures only)
CUNV-JBX-RI-XL	Universal tough in plate Extra Long (Round fixtures only)

## BATTERY BACKUP

Accessory	Description
LED-EMB-15W-HV-0/10V-2P	Up to 15W fixtures
LED-EMB-25W-HV-0/10V-2P	Up to 24W fixtures

## OPTICS

Accessory	Description
OPTIC-30X12-24D	Field Installable 24 Degree Lens

## TESTED COMPATIBLE DIMMERS

Other dimmers may be compatible but have not been tested. Please contact us for more information. **TRIAC/ELV Dimmers**

Lutron	Leviton	Legrand	Cooper
AYCL-153P	6633	ADTP703TU	9540
DV-600PR	6674	H703PTW	DAL06P
DVCL-153P	6602		
MACL-153MH	IPL06		
MRF2-6CL			
D-600P			
NTELV-300P			
S-600P			
CT-600P			
CTCL-153P			
TG-600P			
TCCL-153P			

Specs and model numbers are subject to change with or without notice.