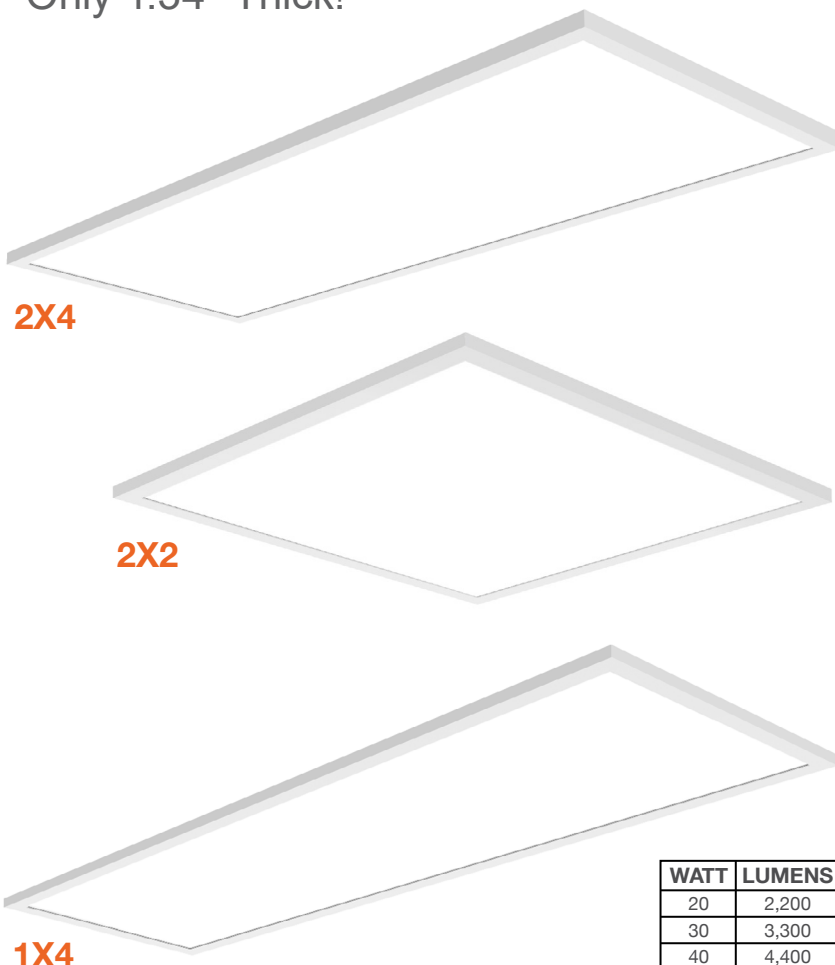




# Internal-Line: Surface Mount LED Panels

Only 1.34" Thick!



WATT	LUMENS
20	2,200
30	3,300
40	4,400
50	5,500

## Detail Specifications:

- Finish: White, Custom finishes available
- IP Rating: Damp Location IP44
- 5CCT: 27/30/35/40/50K
- Beam Angle: 110°
- Chip: SMD 2835, R9 >50, CRI >80
- Operating Temperature: -40° - 114° F
- Lens: PS diffuser
- Average life (L70) of 50,000 hours

## Applications:

- General Indoor Lighting
- Utility & Storage
- Office and Meeting Rooms
- Education, Healthcare, Retail, Hospitality
- Residential and Commercial

## Product Information:

- Aluminum housing finished with corrosion free powder coat
- Even light distribution
- Lightweight for easier installation
- Super slim only 1.34" thick!
- Select-n-Switch Technology: 5-CCT + 3-Power Selectable

## Driver Options:

- 120-277V 0-10V Dimmable
- THD: <20% (+/-5% tolerance), PF >0.9, 50/60Hz
- Isolated Driver
- Flicker Free

## Mounting & Installations:

- 30/40 Junction Box
- Surface mount bracket included

## Certifications:

- UL Listed for USA and CA
- DLC Listed
- Approved for CA T24
- 5 Year Limited Warranty
- FCC CFR 47, GCC Part 15, Subpart B:2017

## Series

**LED-BPL-SM-2X2-3M40-5CCT**  
40/30/20W  
**LED-BPL-SM-1X4-3M40-5CCT**  
40/30/20W  
**LED-BPL-SM-2X4-3M50-5CCT**  
50/40/30W

## Optional Accessories

### Emergency Backups

**LED-EMB-8W-HV-0/10V-2P**  
8W  
**LED-EMB-15W-HV-0/10V-2P**  
15W  
**LED-EMB-25W-HV-0/10V-2P**  
25W  
**LED-EMB-32W-HV-0/10V**  
32W

Specs and model numbers are subject to change with or without notice. Customization of product is available.

## FEATURES

Powder-Coated White Frame

Frosted Lens

● 2700K  
● 3000K  
● 3500K  
● 4000K  
● 5000K

5-CCT  
Selectable

● LOW  
20W  
● MID  
30W  
● HIGH  
40W

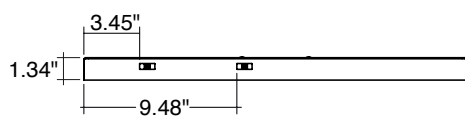
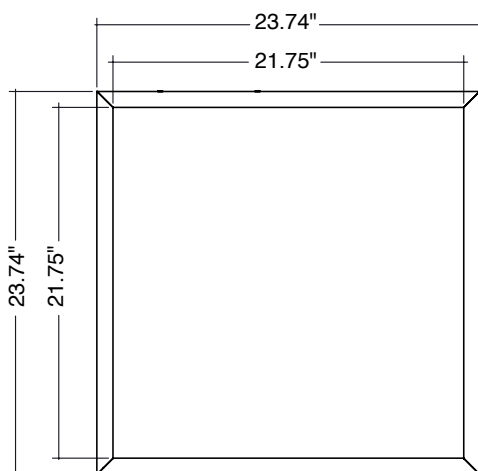
3 Watt  
Selectable

Unique Back-Lit Design

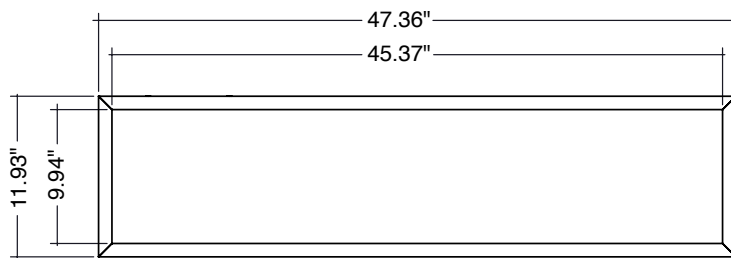
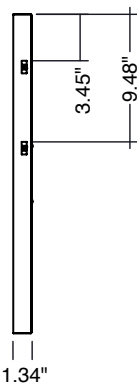
Only 1.34" Thick

2 Carabiner  
Safety Locks

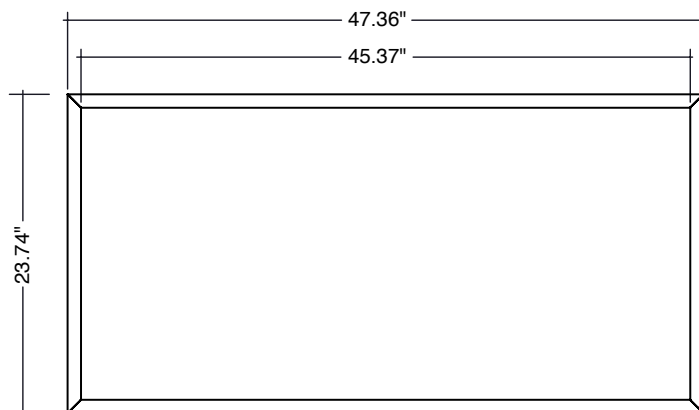
## DIMENSIONS



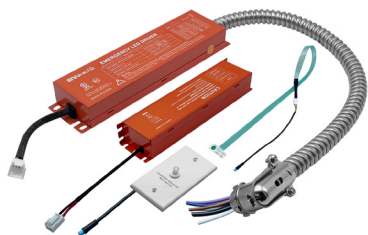
**2X2**



**1X4**



**2X4**



**LED-EMB-8W-HV-0/10V-2P**  
**LED-EMB-15W-HV-0/10V-2P**  
**LED-EMB-25W-HV-0/10V-2P**



**LED-EMB-32W-HV-0/10V**

Model	Voltage	Watts	Lumens	Color	CRI
LED-BPL-SM-1X4-3M40-5CCT	120/277V	40/30/20w	4,400/3,300/2,200	27/30/35/40/50k	>80
LED-BPL-SM-2X2-3M40-5CCT	120/277V	40/30/20w	4,400/3,300/2,200	27/30/35/40/50k	>80
LED-BPL-SM-2X4-3M50-5CCT	120/277V	50/40/30w	5,500/4,400/3,300	27/30/35/40/50k	>80

## EMERGENCY BACK UP

Accessory	Description
LED-EMB-8W-HV-0/10V-2P	Emergency Back Up: 120v OUTPUT (Works with all 0-10V Dim or <8W fixtures -2 Piece Split Design-
LED-EMB-15W-HV-0/10V-2P	Emergency Back Up: 120v OUTPUT (Works with all 0-10V Dim or <15W fixtures -2 Piece Split Design-
LED-EMB-25W-HV-0/10V-2P	Emergency Back Up: 120v OUTPUT (Works with all 0-10V Dim or <25W fixtures -2 Piece Split Design-
LED-EMB-32W-HV-0/10V	Emergency Back Up: 120v OUTPUT (Works with 0-10V Dim or <32W fixtures