

Project	
Schedule	Date
Notes	
Catalog Number	

Strip Light

Product Description

naturalLED[®] Utility Strip Light provides the perfect solution for your lighting needs. The LED utility strip light maximizes energy savings and is designed for multiple applications including retrofit and new construction. The fixture is 48-inches long and can be installed end to end.

The LED Utility Strip Light can be used for warehouse, parking garages, stairwells, offices, hallways and many other applications in industrial, commercial and residential. Types of installation include ceiling, wall, chain or cable mounting. Our Utility Strip Light is very versatile, efficient and is available in 40 watt, 4000K and 5000K delivering up to 4,200 lumens with excellent, consistent color. Our Utility Strip Light features an acrylic opaque lens with an aluminum body.



Features & Benefits

- ▶ DLC Qualified
- ▶ UL Damp
- ▶ Uniform light distribution and consistent color
- ▶ Easy installation with multiple mounting options: Mounting brackets and clips included for ceiling, wall, cable and chain. 1/2" knockouts for end, side and end to end connections
- ▶ Material and Finish: Aluminum housing and opaque lens
- ▶ Rated 50,000 hours average life

Specifications

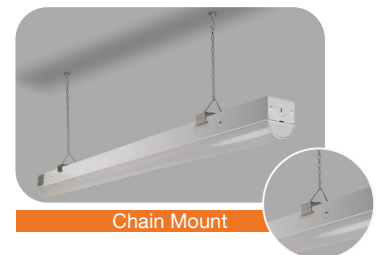
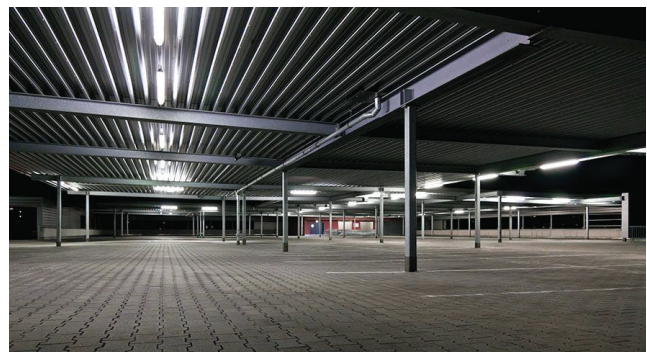
- ▶ Input line voltage: 120-277V
- ▶ CRI: 80
- ▶ 0-10V Dimming
- ▶ Powerfactor >0.9
- ▶ Beam Angle: Flood
- ▶ Operating temperature: -22°F ~ 122°F

Applications

- ▶ Warehouse
- ▶ Parking Garage
- ▶ Stairwells & Hallways
- ▶ Utility Closets



Mountings

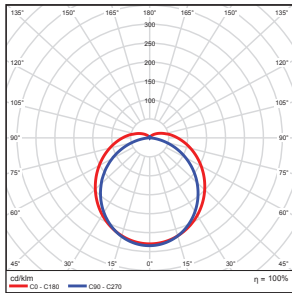


Ordering Information

Code	Description	CCT	Watt	Lumen	Equiv Wattage	Size	Beam Angle	Voltage	Rated Hrs	DAMP LOCATION	DLC
7593	LED-FXUSL40/48FR/840/MV	4000K	40	4,387	Replaces 1-3 FL T8	2.5" x 48"	Flood	120-277	50,000	•	•
7594	LED-FXUSL40/48FR/850/MV	5000k	40	4,518		2.5" x 48"	Flood	120-277	50,000	•	•

Photometric Data

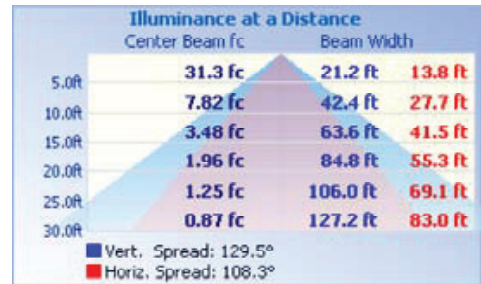
40 Watt



Zonal Lumen Summary

Zone	Lumens	% Luminaire
0-30	607.39	21.80
0-40	997.09	35.70
0-60	1794.97	64.40
60-80	574.00	20.60
70-80	246.67	8.80
90-120	207.92	7.50
90-180	254.33	9.10
0-180	2789.12	100.00

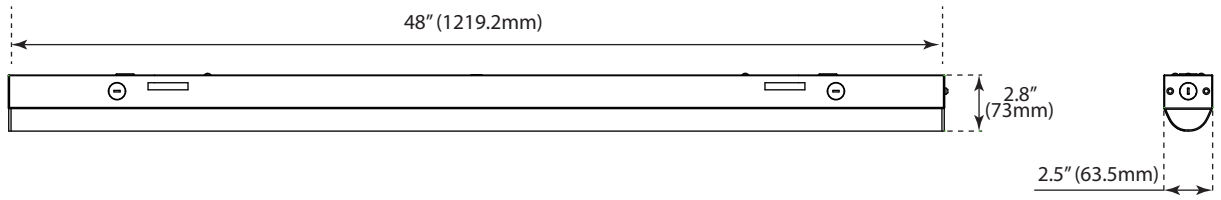
Total Luminaire Efficiency = 100.00%



Product Dimensions

40W

Weight: 3.15-lbs



Package

